

具有 SHA-256-HMAC 认证引擎，2kbit EEPROM 的 TMP1827 单线 $\pm 0.3^{\circ}\text{C}$ 精度温度传感器

1 特性

- 具有多点共享总线和 CRC 的单线接口
- 总线供电的工作电压为 1.7V 至 5.5V
- IEC 61000-4-2 ESD 用于 8kV 接触放电
- 高精度数字温度传感器：
 - -20°C 至 $+85^{\circ}\text{C}$ 范围内为 $\pm 0.1^{\circ}\text{C}$ (典型值) / $\pm 0.3^{\circ}\text{C}$ (最大值)
 - -55°C 至 $+125^{\circ}\text{C}$ 范围内为 $\pm 0.3^{\circ}\text{C}$ (典型值) / $\pm 0.5^{\circ}\text{C}$ (最大值)
 - -55°C 至 $+150^{\circ}\text{C}$ 范围内为 $\pm 0.5^{\circ}\text{C}$ (典型值) / $\pm 1.0^{\circ}\text{C}$ (最大值)
- 有效电流为 $100\mu\text{A}$ (典型值) 和关断电流为 $1.0\mu\text{A}$ (典型值)
- 16 位温度分辨率： $7.8125\text{m}^{\circ}\text{C}$ (1LSB)
- 超速度下的快速数据速率为 90kbps
- 灵活的用户可编程短地址模式，用于更快的器件寻址
- SHA-256-HMAC 认证方案
 - 以符合 FIPS 180-4 的安全散列标准实施
 - 以符合 FIPS 198-1 标准的 HMAC 算法实施
- 2Kbit EEPROM 功能：
 - 64 位块大小的写操作
 - 连续读取模式
 - 带写保护的读取，页面大小为 256 位
 - 页面大小为 256 位的认证写保护模式
 - 读/写电流为 $95\mu\text{A}/178\mu\text{A}$ (典型值)
- 用于器件寻址的 NIST 可追溯出厂编程不可擦除 64 位标识号
- 4 个可配置的开漏数字输入输出和温度警报

2 应用

- 工厂自动化和控制
- 电器
- 医疗配件
- CPAP 呼吸机
- 电池组
- 冷链应用
- 温度变送器
- 电动汽车充电基础设施

3 说明

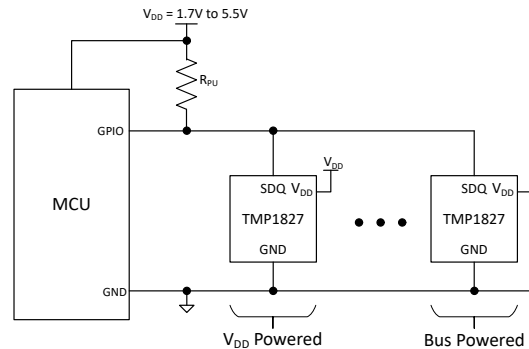
TMP1827 是一款高精度、单线兼容的数字输出温度传感器，集成了 2kbit EEPROM 和 SHA-256-HMAC 认证方案，具有从 -55°C 到 $+150^{\circ}\text{C}$ 的宽工作温度范围。TMP1827 在 -20°C 至 $+85^{\circ}\text{C}$ 的温度范围内提供 $\pm 0.1^{\circ}\text{C}$ (典型值) / $\pm 0.3^{\circ}\text{C}$ (最大值) 的高精度。每个器件都带有一个工厂编程的 64 位唯一标识号，用于寻址和 NIST 可追溯性。TMP1827 支持传统应用的标准速度和具有 90kbps 数据速率的过载模式，可在 1.7V 至 5.5V 的宽电压范围内实现低延迟通信。

在最简单的运行模式下，TMP1827 单线接口在数据引脚上集成了 8kV IEC-61000-4-2 ESD 保护，在总线供电模式下只需要一个连接和一个接地回路，从而通过减少电线和外部保护元件的数量来降低成本。此外， V_{DD} 电源引脚还可用于可能需要专用电源的应用。

封装信息

器件型号	封装 ⁽¹⁾	封装尺寸 (标称值)
TMP1827	WSON (8)	2.50mm × 2.50mm

(1) 有关所有的可用封装，请参阅数据表末尾的可订购产品附录。



简化原理图



Table of Contents

1 特性	1	8.3 Feature Description	13
2 应用	1	8.4 Device Functional Modes	24
3 说明	1	8.5 Programming	39
4 Revision History	2	8.6 Register Maps	43
5 说明 (续)	3	9 Application and Implementation	55
6 Pin Configuration and Functions	4	9.1 Application Information	55
7 Specifications	4	9.2 Typical Applications	55
7.1 Absolute Maximum Ratings.....	4	9.3 Power Supply Recommendations	58
7.2 ESD Ratings.....	4	9.4 Layout	58
7.3 Recommended Operating Conditions.....	5	10 Device and Documentation Support	59
7.4 Thermal Information.....	5	10.1 Documentation Support	59
7.5 Electrical Characteristics.....	5	10.2 接收文档更新通知	59
7.6 1-Wire Interface Timing.....	7	10.3 支持资源	59
7.7 Security Engine Characteristics.....	7	10.4 Trademarks	59
7.8 EEPROM Characteristics.....	7	10.5 Electrostatic Discharge Caution	59
7.9 Timing Diagrams.....	8	10.6 术语表	59
7.10 Typical Characteristics.....	10	11 Mechanical, Packaging, and Orderable Information	59
8 Detailed Description	13	11.1 Package Option Addendum	63
8.1 Overview.....	13	11.2 Tape and Reel Information	64
8.2 Functional Block Diagram.....	13		

4 Revision History

注：以前版本的页码可能与当前版本的页码不同

DATE	REVISION	NOTES
September 2022	*	Initial Release

5 说明 (续)

TMP1827 实施 SHA-256-HMAC 身份验证引擎以及密钥存储，以满足终端设备的系统身份验证要求。器件上的 2 kbit EEPROM 允许主机应用以 64 位块大小存储应用特定的内容。存储器能以 256 位的页面大小进行写保护，以避免意外的数据覆盖。存储器架构使应用能够在更新只有几个字节的变量时优化总线带宽，同时为写保护提供理想存储器大小。该器件还具有通过经过身份验证的存储器写入操作进行主机身份验证的机制。

6 Pin Configuration and Functions

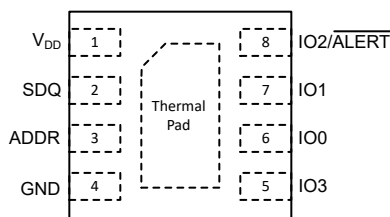


图 6-1. NGR 8-Pin WSON Top View

表 6-1. Pin Functions

PIN		I/O	DESCRIPTION
NAME	WSON		
ADDR	3	I	Resistor address select. If unused, TI recommends to connect pin to ground
GND	4	—	Ground
IO0	6	I/O	General-purpose digital IO. If unused, TI recommends to connect pin to ground
IO1	7	I/O	General-purpose digital IO. If unused, TI recommends to connect pin to ground
IO2/ALERT	8	I/O	General-purpose digital IO or configurable as temperature alert. If unused, TI recommends to connect pin to ground
IO3	5	I/O	General-purpose digital IO. If unused, TI recommends to connect pin to ground
SDQ	2	I/O	Serial bidirectional data. In bus power mode, the pin is used to power the internal capacitor
V _{DD}	1	I	Supply voltage in V _{DD} powered mode. In bus powered mode, must be connected to ground

7 Specifications

7.1 Absolute Maximum Ratings

Over free-air temperature range unless otherwise noted⁽¹⁾

		MIN	MAX	UNIT
Supply voltage	V _{DD}		6.5	V
I/O voltage	SDQ, Bus powered mode	– 0.3	6.5	V
	SDQ, Supply powered mode	– 0.3	V _{DD} + 0.3	
I/O voltage	IO0, IO1, IO2, IO3	– 0.3	6.5	V
I/O voltage	ADDR	– 0.3	1.65	V
Operating junction temperature, T _J		– 55	155	°C
Storage temperature, T _{stg}		– 65	155	°C

- (1) Stresses beyond those listed under *Absolute Maximum Ratings* may cause permanent damage to the device. These are stress ratings only, which do not imply functional operation of the device at these or any other conditions beyond those indicated under *Recommended Operating Conditions*. Exposure to absolute-maximum-rated conditions for extended periods may affect device reliability.

7.2 ESD Ratings

				VALUE	UNIT
V _(ESD)	Electrostatic discharge	Human-body model (HBM), per ANSI/ESDA/JEDEC JS-001 ⁽¹⁾	All pins	±2000	V
		Charged-device model (CDM), per JEDEC specification JESD22-C101 ⁽²⁾	All pins	±500	V
		IEC 61000-4-2 Contact Discharge	SDQ pin	±8000	V

- (1) JEDEC document JEP155 states that 500-V HBM allows safe manufacturing with a standard ESD control process.
(2) JEDEC document JEP157 states that 250-V CDM allows safe manufacturing with a standard ESD control process.

7.3 Recommended Operating Conditions

		MIN	NOM	MAX	UNIT
V _{DD}	Supply voltage V _{DD} powered mode	1.70		5.5	V
V _{PUR}	Supply voltage on SDQ in bus powered mode (V _{DD} = GND)	1.70		5.5	V
V _{IO}	All IO pins in V _{DD} powered mode (except SDQ and ADDR ⁽¹⁾)	0		5.5	V
	SDQ pin in V _{DD} powered mode	0		V _{DD} + 0.3	V
T _A	Operating ambient temperature ⁽²⁾	-55		150	°C

- (1) If ADDR pin is not used, it is recommended to be connected to GND
(2) In bus powered mode, overdrive speed supports the max operating temperature up to 150°C, while standard speed supports up to 125°C for full V_{PUR} range and 150°C for V_{PUR} > 2.5V (See [图 7-17](#))

7.4 Thermal Information

THERMAL METRIC ⁽¹⁾		TMP1827	UNIT
		NGR (WSON)	
		8 PINS	
R _{θJA}	Junction-to-ambient thermal resistance	66.1	°C/W
R _{θJC(top)}	Junction-to-case (top) thermal resistance	55.7	°C/W
R _{θJC(bot)}	Junction-to-case (bottom) thermal resistance	20.2	°C/W
R _{θJB}	Junction-to-board thermal resistance	26.3	°C/W
ψ _{JT}	Junction-to-top characterization parameter	1.0	°C/W
ψ _{JB}	Junction-to-board characterization parameter	26.1	°C/W
M _T	Thermal Mass	TBD	mJ/°C

- (1) For more information about traditional and new thermal metrics, see the *IC Package Thermal Metrics* application report, [SPRA953](#).

7.5 Electrical Characteristics

Over free-air temperature range and V_{DD} = 1.7 V to 5.5 V (unless otherwise noted); Typical specifications are at T_A = 25 °C and V_{DD} = 3.3 V (unless otherwise noted)

PARAMETER		TEST CONDITIONS		MIN	TYP	MAX	UNIT
TEMPERATURE SENSOR							
T _{ERR}	Temperature accuracy	- 20 °C to 85°C			±0.1	±0.3	°C
		- 55 °C to 125°C			±0.3	±0.5	
		- 55 °C to 150°C			±0.5	±1.0	
PSR	DC power supply sensitivity					±0.03	°C/V
T _{RES}	Temperature resolution	Including sign bit			16		Bits
		LSB			7.8125		m°C
T _{REPEAT}	Repeatability ⁽¹⁾	V _{DD} = 3.3 V Averaging enabled, Conversion Time = 5.5 ms, 16-bit mode, 1-Hz conversion interval, 300 acquisition			±2		LSB
T _{LTD}	Long-term stability and drift	1000 hours at 150°C ⁽²⁾			0.0625		°C
T _{HYST}	Temperature cycling and hysteresis	T _{START} = - 40°C T _{FINISH} = 150°C T _{TEST} = 25°C 3 cycles			4		LSB
t _{RESP_L}	Response time (Stirred Liquid)	Single layer Flex PCB	τ = 63 % 25°C to 75°C		0.77		s
		2-layer 62-mil Rigid PCB			1.91		s
t _{ACT}	Active Conversion time (No Averaging)	CONV_TIME_SEL = 0	(图 8-12)	TBD	3	TBD	ms
		CONV_TIME_SEL = 1		TBD	5.5	TBD	ms

Over free-air temperature range and $V_{DD} = 1.7\text{ V}$ to 5.5 V (unless otherwise noted); Typical specifications are at $T_A = 25^\circ\text{C}$ and $V_{DD} = 3.3\text{ V}$ (unless otherwise noted)

PARAMETER		TEST CONDITIONS	MIN	TYP	MAX	UNIT
t_{DELAY}	Start-up delay for temperature conversion and EEPROM programming		100		300	μs
SDQ DIGITAL INPUT/OUTPUT						
C_{IN}	SDQ pin capacitance			40		pF
V_{IL}	Input logic low level ⁽³⁾		- 0.3	$0.2 \times V_S$		V
V_{IH}	Input logic high level ⁽³⁾		$0.8 \times V_S$	$V_S + 0.3$		V
V_{HYST}	Hysteresis			0.3		V
I_{IN}	Input leakage current			± 0.5	TBD	μA
V_{OL}	Output low level	$I_{\text{OL}} = -4\text{ mA}$			0.4	V
GPIO CHARACTERISTICS						
C_{IN}	Input capacitance			10		pF
V_{IL}	Input logic low level ⁽³⁾		- 0.3	$0.2 \times V_S$		V
V_{IH}	Input logic high level ⁽³⁾		$0.8 \times V_S$	$V_S + 0.3$		V
I_{IN}	Input leakage current			0	± 0.1	μA
V_{HYST}	Hysteresis			0.175		V
V_{OL}	Output low level	$I_{\text{OL}} = -4\text{ mA}$			0.4	V
RESISTOR ADDRESS DECODER CHARACTERISTICS						
C_{LOAD}	Load capacitance as seen on ADDR pin (includes PCB parasitics)				100	pF
	R_{ADDR} resistor range		6.49		54.9	k Ω
	R_{ADDR} resistor tolerance	$T_A = 25^\circ\text{C}$	- 1.0		1.0	%
	R_{ADDR} resistor temperature coefficient		- 100		100	ppm/ $^\circ\text{C}$
	R_{ADDR} resistor lifetime drift		- 0.2		0.2	%
t_{RESET}	Resistor decoding time			2.8		ms
POWER SUPPLY						
I_{PU}	Pullup current ⁽⁴⁾	Bus powered mode, serial bus inactive	300			μA
$I_{\text{DD_ACTIVE}}$	Supply current during temperature conversion	Temperature Conversion, serial bus inactive		97	TBD	μA
$I_{\text{DD_SB}}$	Standby current ⁽⁵⁾	V_{DD} powered, serial bus inactive, continuous conversion mode	$T_A = -55^\circ\text{C}$ to 85°C	1.59	TBD	μA
			$T_A = -55^\circ\text{C}$ to 150°C		TBD	
$I_{\text{DD_SD}}$	Shutdown current	Serial bus inactive, one shot conversion mode	$T_A = -55^\circ\text{C}$ to 85°C	1.01	TBD	μA
			$T_A = -55^\circ\text{C}$ to 150°C		TBD	
V_{POR}	Power-on reset threshold voltage	Supply rising (图 7-4, 图 7-5)	1.5			V
	Brownout detect	Supply falling			1.3	V
t_{INIT}	Reset Initialization Time	Time required by device to reset after power up (图 7-4, 图 7-5)			2.0	ms

- (1) Repeatability is the ability to reproduce a reading when the measured temperature is applied consecutively, under the same conditions. See 图 7-11
- (2) Long term stability is determined using accelerated operational life testing at a junction temperature of 150°C .
- (3) In bus powered mode $V_S = V_{\text{PUR}}$. In supply powered mode $V_S = V_{\text{DD}}$.
- (4) The pullup current parameter is required to size the bus pullup resistor (See 节 8.3.3) for active temperature conversion or EEPROM read and program or authentication operations.
- (5) Quiescent current between conversions.

7.6 1-Wire Interface Timing

Over free-air temperature range and $V_{DD} = 1.70\text{ V}$ to 5.5 V (unless otherwise noted)

		STANDARD MODE		OVERDRIVE MODE		UNIT
		MIN	MAX	MIN	MAX	
BUS RESET AND BIT SLOT TIMING						
t _{RSTL}	Host to device bus reset pulse width (图 7-1) ⁽¹⁾	480	560	48	80	μs
t _{RSTH}	Device to host response time (图 7-1) ⁽²⁾	480		48		μs
t _{PDH}	Device turnaround time for bus reset response (图 7-1)	15	60	2	8	μs
t _{PDL}	Device to host response pulse width (图 7-1)	60	240	8	24	μs
t _{SLOT}	Bit slot time (图 7-2, 图 7-3)	60	120	11		μs
t _{REC}	Recovery time (图 7-2, 图 7-3)	2		2		μs
t _{GF}	Glitch filter width (图 7-6) ⁽³⁾	0.48		0.025		μs
t _F	Fall time		100		100	ns
BIT WRITE TIMING						
t _{WR0L}	Host write 0 width (图 7-2)	60	120	9	10	μs
t _{WR1L}	Host write 1 width (图 7-2)	2	15	1	2	μs
t _{RDV}	Device read data valid time (图 7-2)	15		2		μs
t _{DSW}	Device read data window (图 7-2)	15	45	2	7	μs
BIT READ TIMING						
t _{RL}	Host drive read bit slot time (图 7-3)	2	5	2	3	μs
t _{RWAIT}	Host wait time before read data sampling window (图 7-3) ⁽⁴⁾		t _{RL} +t _{RC}		t _{RL} +t _{RC}	μs
t _{MSW}	Host read data sampling window (图 7-3)	t _{RL} +t _{RC}	30	t _{RL} +t _{RC}	3	μs

- (1) In bus powered mode, extending the t_{RSTL} above $600\text{ }\mu\text{s}$ may cause the device to power on reset
- (2) The t_{RSTH} is the maximum time the host must wait to receive a response from the furthest device, taking into account the propagation delay and recovery time for all the devices.
- (3) The glitch filter timing applies only on the rising edge of the SDQ signal
- (4) The t_{RC} time is defined as the time taken for the bus voltage to rise from 0 V to minimum V_{IH} of the host. This is a function of the bus pullup resistor and parasitic capacitance of the trace or cable.

7.7 Security Engine Characteristics

Over free-air temperature range and $V_{DD} = 1.7\text{ V}$ to 5.5 V (unless otherwise noted)

		MIN	TYP	MAX	UNIT
t_{HASH_DATA}	Computation time for SHA-256 hash calculation for data size of 8 bytes			355	μs
$t_{DECOMMISSION}$	Time for decommission of the device		78	130	ms
I_{DD_HASH}	Hash computation current			TBD	μA

7.8 EEPROM Characteristics

Over free-air temperature range and $V_{DD} = 1.7\text{ V}$ to 5.5 V (unless otherwise noted); Typical specifications are at $T_A = 25^\circ\text{C}$ and $V_{DD} = 3.3\text{ V}$ (unless otherwise noted)

		MIN	TYP	MAX	UNIT
t_{PROG}	Programming time for 8-byte data word in user EEPROM		13.2	21	ms
	Programming time for register copy to EEPROM		26.4	42	ms
$t_{READIDLE}$	Idle bus time for EEPROM 8-byte data word fetch			400	μs
I_{DD_PROG}	Programming current		178	TBD	μA
Data Retention	at $T_A = 125^\circ\text{C}$	25			years
	at $T_A = 150^\circ\text{C}$	10			years

Over free-air temperature range and $V_{DD} = 1.7\text{ V}$ to 5.5 V (unless otherwise noted); Typical specifications are at $T_A = 25^\circ\text{C}$ and $V_{DD} = 3.3\text{ V}$ (unless otherwise noted)

		MIN	TYP	MAX	UNIT
Endurance	For erase and program cycles	1000	20000		cycles

7.9 Timing Diagrams

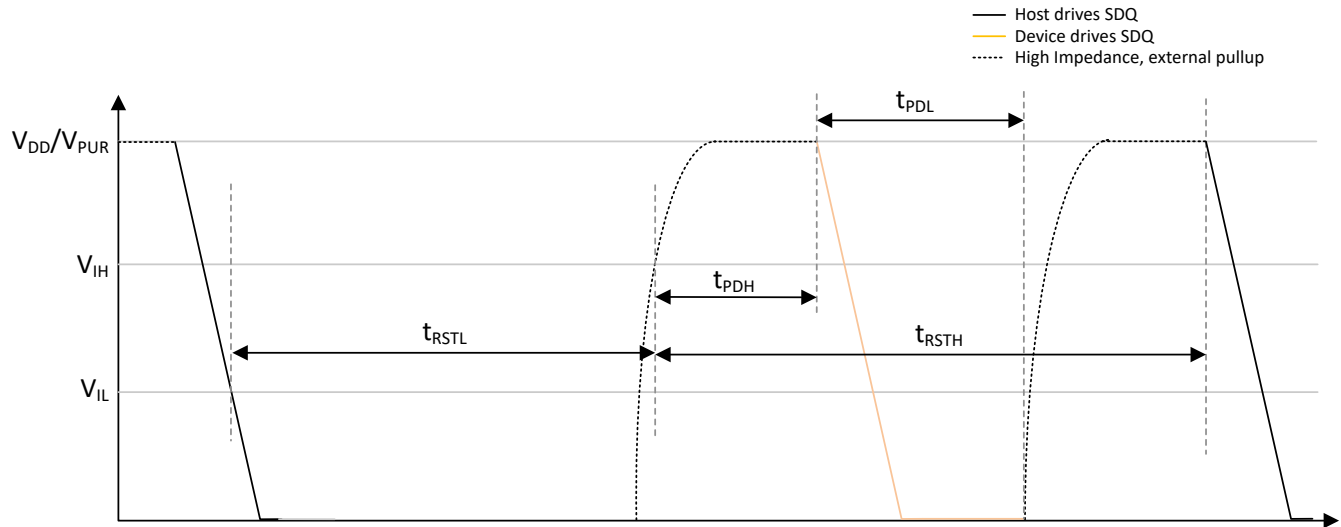


图 7-1. Bus Reset Timing Diagram

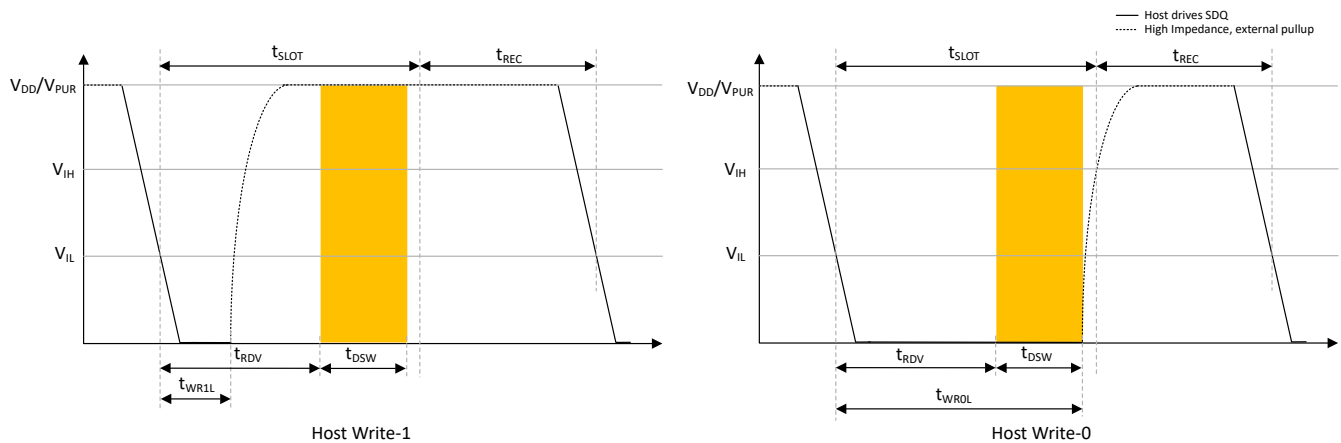


图 7-2. Write Timing Diagram

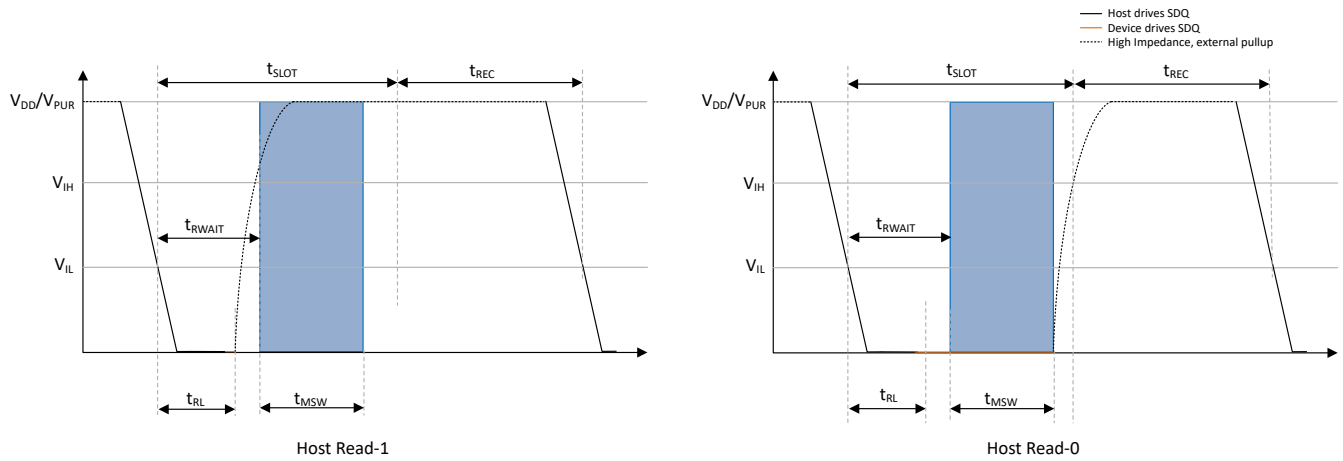


图 7-3. Read Timing Diagram

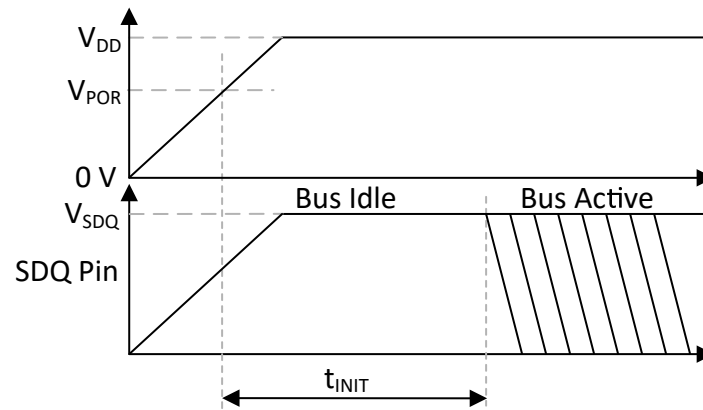


图 7-4. V_{DD} Powered Initialization Timing Diagram

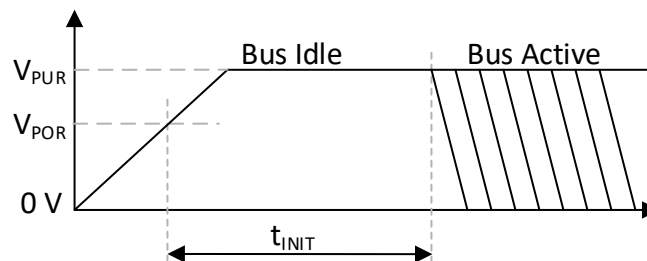


图 7-5. Bus Powered Initialization Timing Diagram

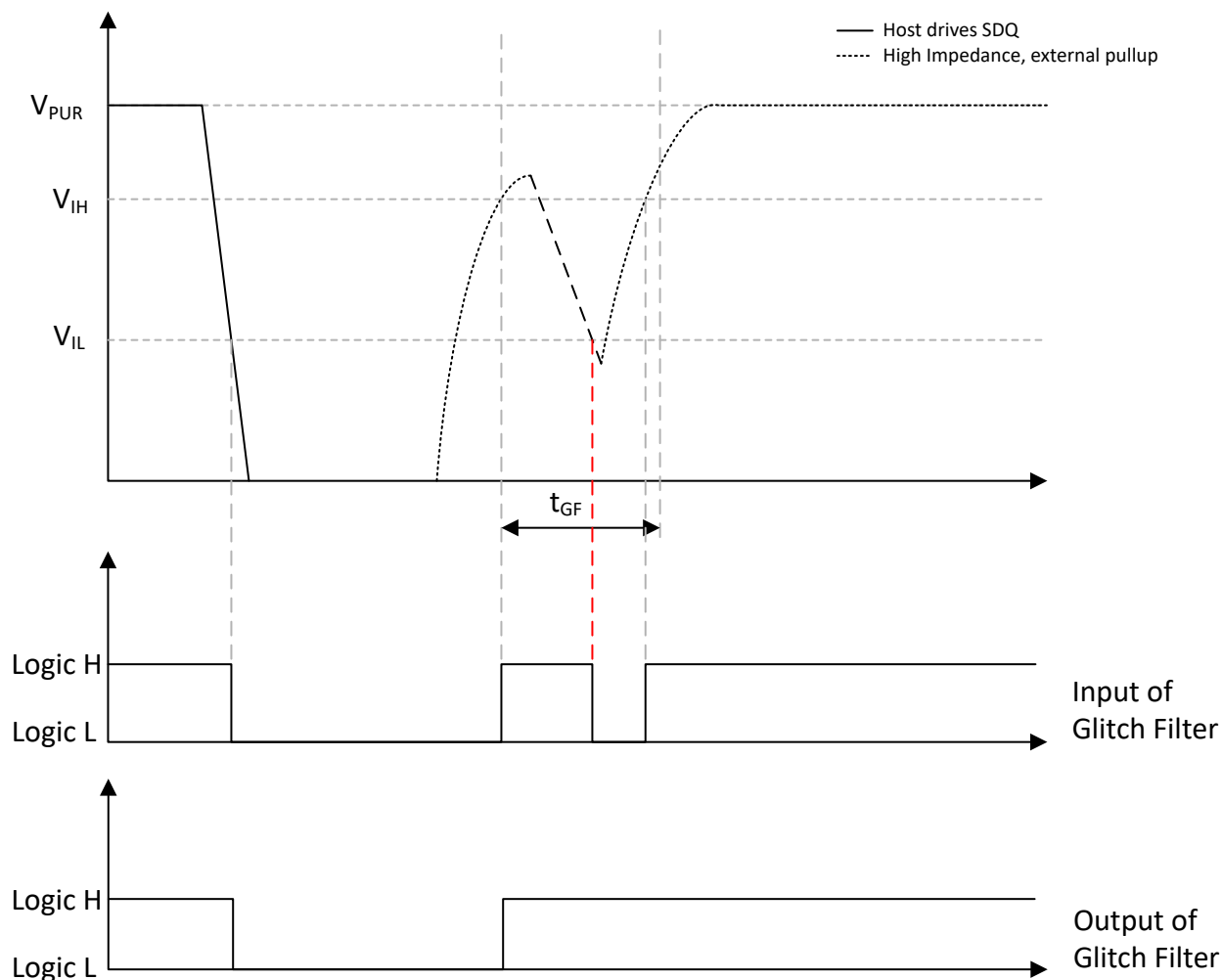


图 7-6. Glitch Filter Timing Diagram

7.10 Typical Characteristics

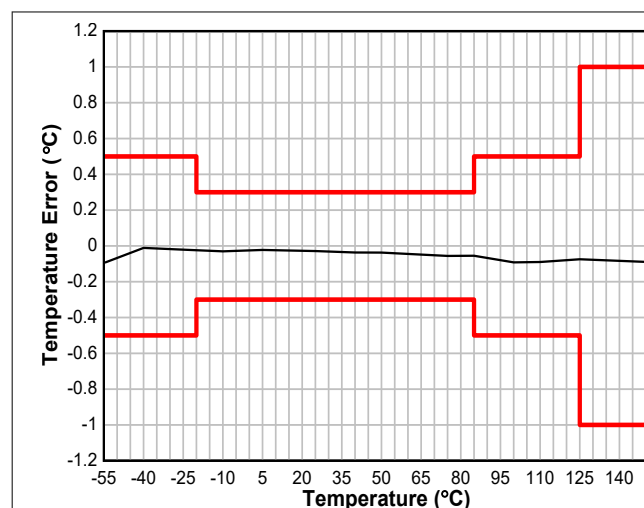


图 7-7. Temperature Error vs Temperature (NGR Package)

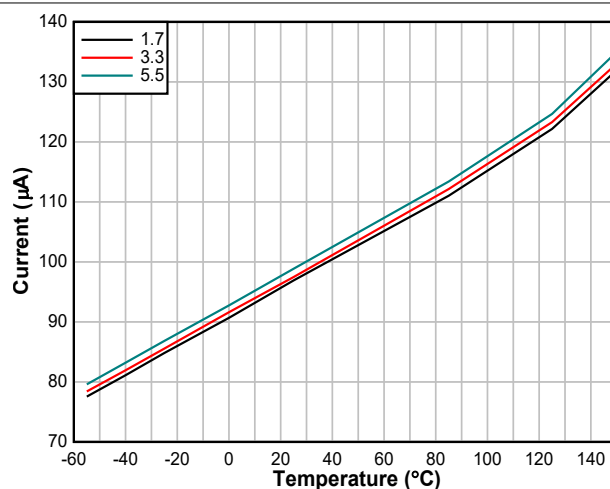


图 7-8. Temperature Conversion Current vs Temperature

7.10 Typical Characteristics (continued)

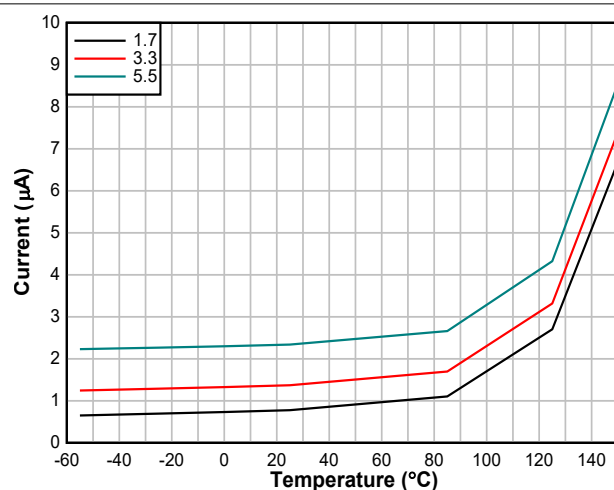


图 7-9. Shutdown Current vs Temperature

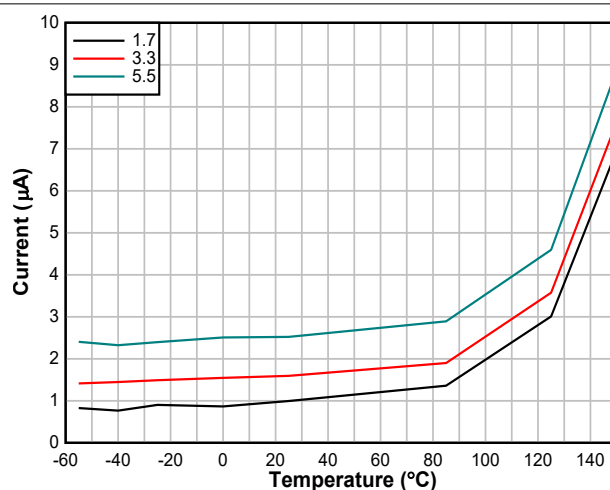
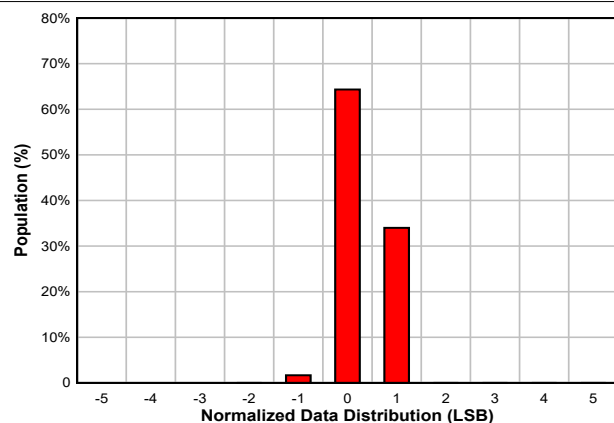
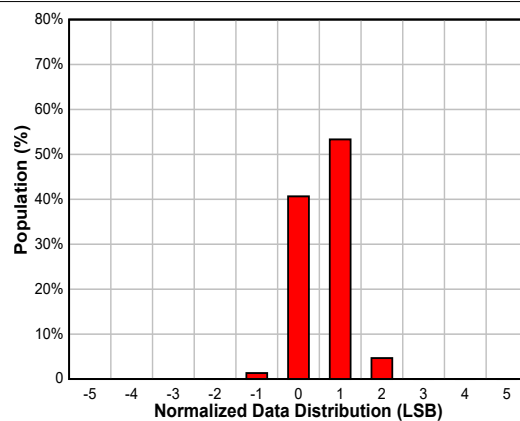


图 7-10. Standby Current vs Temperature



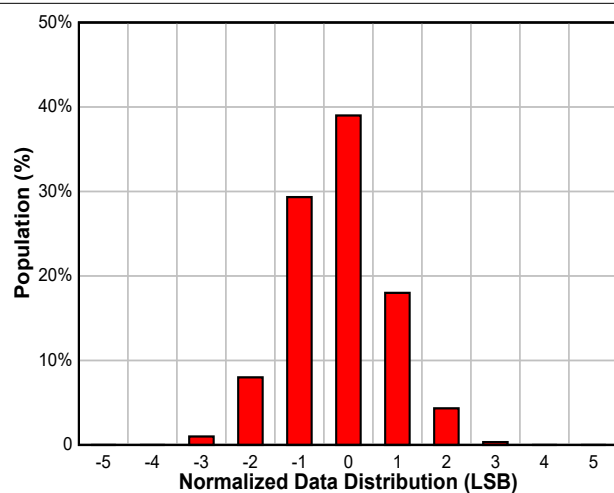
$T_A = 25^\circ\text{C}$

图 7-11. Data Distribution With 5.5-ms Conversion Time and Averaging On



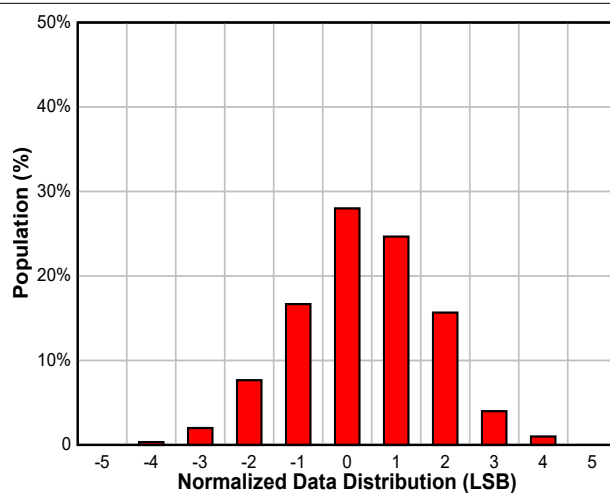
$T_A = 25^\circ\text{C}$

图 7-12. Data Distribution With 3-ms Conversion Time and Averaging On



$T_A = 25^\circ\text{C}$

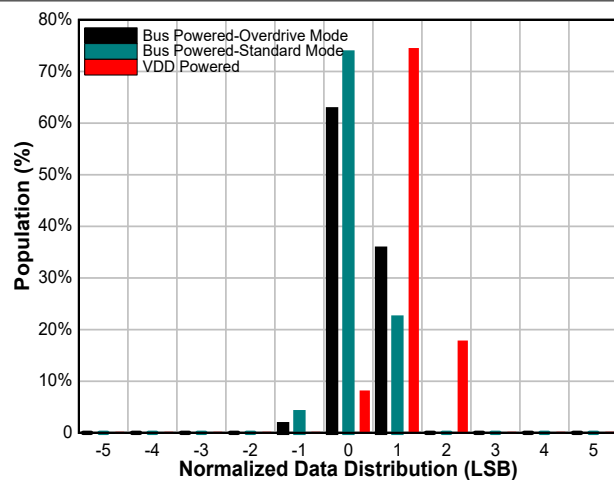
图 7-13. Data Distribution With 5.5-ms Conversion Time and Averaging Off



$T_A = 25^\circ\text{C}$

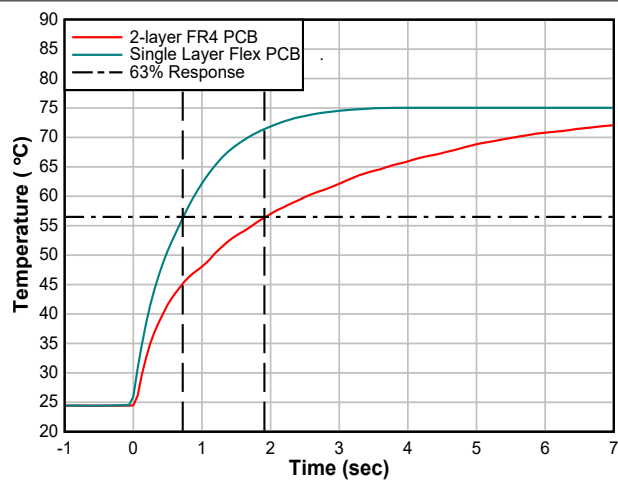
图 7-14. Data Distribution With 3-ms Conversion Time and Averaging Off

7.10 Typical Characteristics (continued)



$T_A = 25^\circ\text{C}$, 5.5 ms Conversion Time, Averaging On

图 7-15. Data Distribution for Power Mode and Bus Speed



$T_{\text{START}} = 25^\circ\text{C}$, $T_{\text{FINISH}} = 75^\circ\text{C}$

图 7-16. Thermal Response Time (NGR)

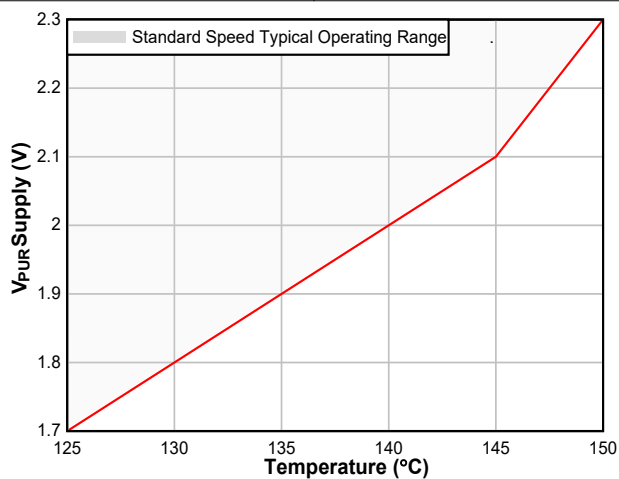


图 7-17. V_{PUR} Minimum Supply Voltage vs Temperature (Standard Speed)

8 Detailed Description

8.1 Overview

The TMP1827 is a digital output temperature sensor designed for thermal-management and thermal-protection applications. The TMP1827 is a single-wire device which can operate in either supply powered or bus powered (parasitic powered) mode. The device features a 2-kbit EEPROM, SHA-256-HMAC based authentication engine.

Figure 8-1 shows a block diagram of the TMP1827.

8.2 Functional Block Diagram

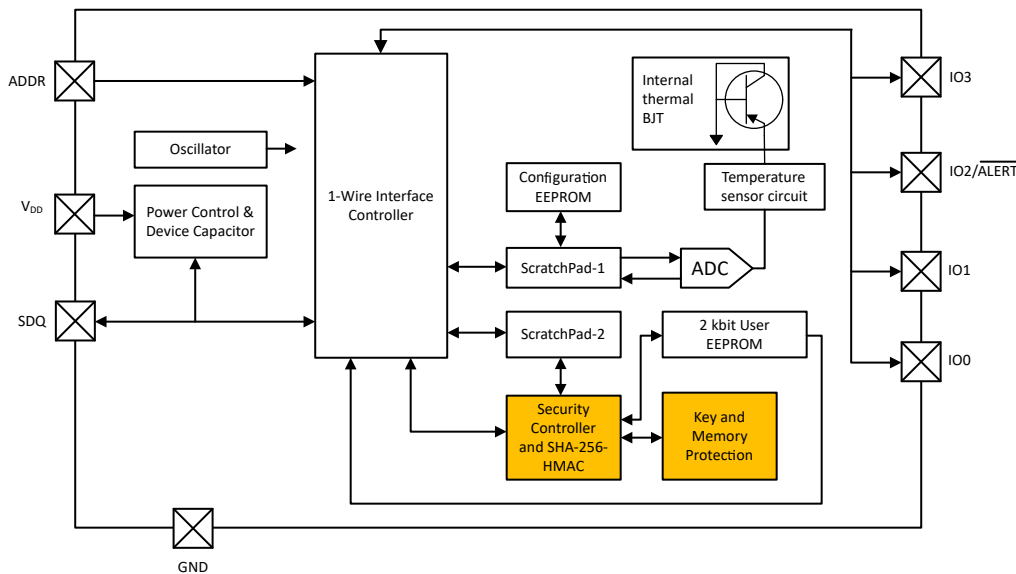


Figure 8-1. Functional Block Diagram

8.3 Feature Description

8.3.1 Power Up

The device operates in both supply powered and bus powered mode. Irrespective of the mode, when the supply voltage reaches within the operating range, the device requires t_{INIT} to initialize itself. After t_{INIT} , the host MCU can begin accessing the device.

During initialization, the device may not respond to any bus activity. When initialization is complete, the device shall wait for the bus reset from the host. During the initialization for the device, the following events take place:

- The EEPROM content for [short address](#), [temperature alert low](#), [temperature alert high](#) and [temperature offset](#) registers are restored.
- The EEPROM for the IO configuration register is read and contents of the [IO configuration](#) register is restored.
- The EEPROM content for [device configuration-1](#) and [device configuration-2](#) registers are restored to the respective registers.
 - If the ARB_MODE bits are set to value other than '00b', then the device will respond to the SEARCHADDR in arbitration mode.
 - If OD_EN bit is set to '1b', then the device shall communicate in overdrive speed, unless the first bus reset pulse from the host is sent in standard speed.
- The user memory protection bits are restored and appropriate protection to the user EEPROM block applied.
- The authentication key and secret bytes are read from the EEPROM to internal flops for the authentication operation.

8.3.2 Power Mode Switch

The device is designed to operate in supply powered or bus powered mode. The dual mode implementation provides a unique method of redundancy that, even in cases where the power supply pin gets disconnected, the device can draw power from data pin, as long as the pullup resistor value used is as per the specification limit. This may be the system case where while operating in supply powered mode, the supply pin may accidentally get disconnected, especially under harsh operating conditions.

When the device switches from supply powered to bus powered mode, the device shall operate with the same settings until the internal capacitor is able to provide the current draw required by the device for communication and the external pullup resistor can charge the internal capacitor during bus idle time. If the internal voltage on the capacitor drops below the brown-out threshold, the device shall switch itself off and enter bus powered mode of communication on subsequent power up. The device may not complete the ongoing communication during this time. When the device completes the power-up initialization sequence, as described earlier, the device shall respond to first bus communication starting with the bus reset sequence.

8.3.3 Bus Pullup Resistor

The bus pullup resistance value selected is important for communication as per the speed mode and ensuring that minimal possible energy is consumed in the application. If the resistor value is too small, it may violate the V_{OL} limits on the SDQ pin.

The total SDQ pin and bus capacitance must be considered along with the bus leakage current when selecting the pullup resistor. The pullup resistance value selected must also ensure that the signal level reaches V_{IH} as per the timing requirements for standard and overdrive mode.

In bus powered mode of operation, the device charges its internal capacitor through the SDQ pin and the pullup resistor. This charge on the capacitor is used during bus communication, when the SDQ pin low. For other high current functions like thermal conversion and EEPROM access, the bus is held idle to ensure that the device can draw current through the pullup resistor. The SDQ pin voltage during the high current operation must be maintained to ensure sufficient operating margins. Use [方程式 1](#) to calculate the pullup resistor value.

$$\frac{(V_{PUR} - V_{OL(MAX)})}{4 \times 10^{-3}} < R_{PUR} < \frac{(V_{PUR} - 1.6)}{I_{PU(MIN)}} \quad (1)$$

When the device is used in V_{DD} or supply powered mode, a larger pullup resistor value may be used, as the SDQ pin is used only for communication. The user must ensure that the pullup resistor value selected must be able to support the timing for the required bus speed of operation.

For low current consumption devices like TMP1827, selecting the correct pullup resistor value allows the application to avoid low impedance current path components for bus powered mode of operation while maintaining communication speeds and device parameters as per its electrical specification.

8.3.4 Temperature Results

The conversion is initiated by the host MCU by sending the temperature conversion command if the automatic conversion is disabled, or immediately after the presence detect is completed when the automatic conversion is enabled, or in continuous conversion mode if the device is V_{DD} powered. At the end of every conversion, the device updates the temperature registers [temperature result](#) and the [status](#) register bits. [图 8-2](#) shows that the device supports a high precision and legacy format, which can be configured through the TEMP_FMT bit in the [device configuration-1](#) register.

Temperature Result MSB Register	Temperature Result LSB Register
---------------------------------	---------------------------------

High Precision Format

S	2 ⁷	2 ⁶	2 ⁵	2 ⁴	2 ³	2 ²	2 ¹	2 ⁰	2 ⁻¹	2 ⁻²	2 ⁻³	2 ⁻⁴	2 ⁻⁵	2 ⁻⁶	2 ⁻⁷
---	----------------	----------------	----------------	----------------	----------------	----------------	----------------	----------------	-----------------	-----------------	-----------------	-----------------	-----------------	-----------------	-----------------

Legacy Format

S	S	S	S	S	2 ⁶	2 ⁵	2 ⁴	2 ³	2 ²	2 ¹	2 ⁰	2 ⁻¹	2 ⁻²	2 ⁻³	2 ⁻⁴
---	---	---	---	---	----------------	----------------	----------------	----------------	----------------	----------------	----------------	-----------------	-----------------	-----------------	-----------------

图 8-2. Temperature Format

If the format selected is the high precision 16-bit format, the data in the result registers is stored in two's complement form and has a resolution of 0.0078125°C. If the format selected is the legacy 12-bit format, the data in the result register is stored in sign extended form and has a resolution of 0.0625°C. The temperature register reads as 0°C before the first conversion. 表 8-1 and 表 8-2 show examples of possible binary data that can be read from the temperature result registers and the corresponding hexadecimal and temperature equivalents for both formats.

表 8-1. Precision (16-Bit) Temperature Data Format

TEMPERATURE (°C)	DIGITAL OUTPUT (PRECISION FORMAT)	
	BINARY	HEXADECIMAL
150	0100 1011 0000 0000	4B00
127	0011 1111 1000 0000	3F80
100	0011 0010 0000 0000	3200
25	0000 1100 1000 0000	0C80
1	0000 0000 1000 0000	0080
0.125	0000 0000 0001 0000	0010
0.03125	0000 0000 0000 0100	0004
0.0078125	0000 0000 0000 0001	0001
0	0000 0000 0000 0000	0000
- 0.0078125	1111 1111 1111 1111	FFFF
- 0.03125	1111 1111 1111 1100	FFFC
- 0.125	1111 1111 1111 0000	FFF0
- 1	1111 1111 1000 0000	FF80
- 25	1111 0011 1000 0000	F380
- 40	1110 1100 0000 0000	FC00
- 55	1110 0100 1000 0000	F480

表 8-2. Legacy (12-Bit) Temperature Data Format

TEMPERATURE (°C)	DIGITAL OUTPUT	
	BINARY	HEXADECIMAL
128	0000 0111 1111 1111	07FF
127.9375	0000 0111 1111 1111	07FF
100	0000 0110 0100 0000	0640
25	0000 0001 1001 0000	0190
1	0000 0000 0001 0000	0010
0.125	0000 0000 0000 0010	0002
0	0000 0000 0000 0000	0000
- 0.125	1111 1111 1111 1110	FFFE
- 1	1111 1111 1111 0000	FFF0
- 25	1111 1110 0111 0000	FE70

表 8-2. Legacy (12-Bit) Temperature Data Format (continued)

TEMPERATURE (°C)	DIGITAL OUTPUT	
	BINARY	HEXADECIMAL
- 40	1111 1101 1000 0000	FD80
- 55	1111 1100 1001 0000	FC90

8.3.5 Temperature Offset

The temperature offset has the same format as the temperature result and is stored in the [temperature offset](#) registers.

The device, after every temperature conversion, shall apply the offset value before the temperature is stored in the temperature result register. The host write to the registers can be stored in the configuration EEPROM of the device, thereby reducing the overhead as the host does not need to reprogram the values at every power up. The offset features allow the device to achieve better accuracy at the temperature range for the application by performing a single point calibration.

8.3.6 Temperature Alert

The temperature alert feature uses the [temperature alert low](#) registers for low threshold comparison and [temperature alert high](#) registers for high threshold comparison. The format of the register is the same as the temperature results.

The device shall compare the result of the last conversion with the alert thresholds. If the temperature result is less than the low limit, or more than the high limits, then the device shall set the appropriate alert status flag for low or high temperature limits, in the [status](#) register. The alert status flags are cleared based on the ALERT_MODE setting in the [device configuration-1](#) register.

Additionally, if the IO2/ALERT pin is configured as an alert pin, the alert status is reflected on the pin.

8.3.7 Standard Device Address

Every device comes with a unique 64-bit address that is factory programmed. Additionally the device provides flexible addressing modes that the host controller may use to improve bus throughput. This is described below.

8.3.7.1 Unique 64-Bit Device Address and ID

The device has a hard-coded, 64-bit address which is factory programmed and cannot be altered by the customer application. The unique 64-bit device address is used for device addressing in the end application and for NIST traceability. 图 8-3 shows the format of the 64-bit address. When the host accesses the device or when the device sends its address, the 64-bit unique address is sent least significant bit first. The unique 64-bit address consists of 3 fields. The lower 8 bits consists of the device family code, followed by a 48-bit unique number and 8-bit CRC checksum on the 56 bits preceding it.

The device family code for TMP1827 shall read as 27h.

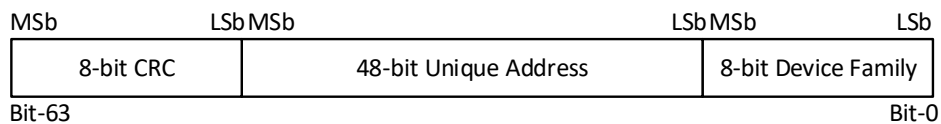


图 8-3. 64-Bit Device Address

8.3.8 Flexible Device Address

Depending on the user application case, the TMP1827 provides for some user and application configurable address modes, called flexible address mode. These modes exist along side the standard device address, and is extremely useful for applications that require a combination of faster access and device position identification.

When the flexible device address is used, the [short address](#) register is updated. The short address register shall be updated by the host write when the FLEX_ADDR_MODE bits are '00b'. When these bits have a value other than '00b', the resulting decode of the resistor connected on ADDR pin or IOs shall be overlaid on the short

address register. This is helpful as the same set of 16 resistors or 16 IO combinations can be used to extend the number of unique flexible address up to 256.

The FLEX_ADDR_MODE is not backed in the configuration EEPROM. Hence after decoding, the host must ensure that copy to configuration EEPROM is performed to make the short address values permanent, without having to decode at every power up.

8.3.8.1 Non-Volatile Short Address

图 8-4 shows the user-programmable, 8-bit short address mode of the device. The host must program the 8-bit short address to the underlying non-volatile memory, using a stand-alone programmer, so that at subsequent power up, the device loads the short address and can respond to the host during the address phase of bus communication.

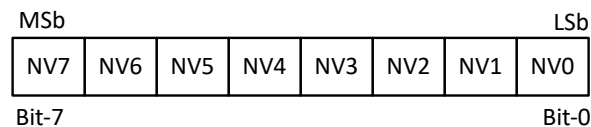


图 8-4. Non-Volatile Short Address

8.3.8.2 IO Hardware Address

图 8-5 shows the 8-bit IO hardware address mode of the device. This feature is available on packages which have general-purpose pins (IO0-IO3) available. The 8-bit value consists of the lower 4 bits as read values of the pins (IO3 to IO0) that is overlaid on the contents of the short address register to form a 8-bit address. The application may connect the general-purpose pins to either V_{DD}/SDQ for logic '1' or GND for logic '0'.

After power up, the host must set the bits FLEX_ADDR_MODE[1:0] as '01b' in the device configuration-2 register for the device to latch the state of the general-purpose pins.

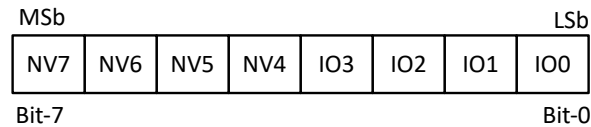


图 8-5. IO Hardware Address

备注

If any of the IO0 to IO3 pins are used in output mode, then the respective value shall be latched as '0'.

8.3.8.3 Resistor Address

The resistor address modes uses a 1% tolerance resistor connected between the ADDR pin and ground. 图 8-6 shows the 8-bit address with the lower 4 bits decoded from the resistor connected, which is overlaid on the contents of the short address register.

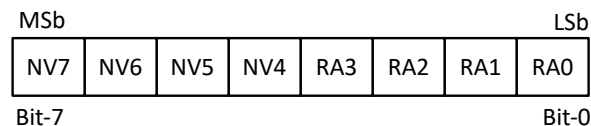


图 8-6. Resistor Address

After power up, the host controller sets the bits FLEX_ADDR_MODE[1:0] as '10b' in the device configuration-2 register which enables the device to sample the pin and identify the resistor connected. After writing the device configuration-2 register, the host must idle the bus for t_{RESDET} , for the device to decode the resistor address. 表 8-3 shows the set value of the device address based on the decoded resistor value. If the ADDR pin connected to GND or lower than 6.49 k Ω , then the address decoder shall always decode as '0000b'. Similarly, if the ADDR pin is connected to a resistor higher than 54.9 k Ω , the address decoder shall always decode as '1111b'.

The host controller must ensure that CONV_MODE_SEL[2:0] is set as '000b' when decoding the resistor address.

表 8-3. Resistor Address Decode

RESISTOR VALUE (k Ω)	ADDRESS DECODE
< 6.49	0h
7.87	1h
9.31	2h
11.0	3h
13.3	4h
15.4	5h
17.8	6h
20.5	7h
23.7	8h
26.7	9h
30.1	Ah
33.2	Bh
37.4	Ch
44.2	Dh
47.5	Eh
> 54.9 or floating	Fh

This mode is useful when the application requires placing the TMP1827 on multiple printed circuit boards (PCBs). The Bill of Materials (BOM) component can be changed easily instead of having multiple PCBs fabricated for individual pin connections, thereby reducing the cost of the system.

备注

The ADDR pin if unused, must be connected to GND. The C_{LOAD} for ADDR pin is due to parasitic capacitance depending on the board layout. There is no requirement to place an external capacitor on the ADDR pin.

8.3.8.4 Combined IO and Resistor Address

In the combined IO and resistor address mode, the IO0 and IO1 pin is used along with the resistor connected between ADDR pin and ground. 图 8-7 shows the 8-bit address with the lower 4 bits decoded from the resistor connected, followed by 2 bits decoded from the IO0 and IO1 pins which may be connected to either VDD/SDQ for logic '1' or GND for logic '0', which is overlaid on the contents of the short address register.

After power up, the host sets the bits FLEX_ADDR_MODE[1:0] as '11b' in the [device configuration-2](#) register which enables the device to sample the ADDR pin to identify the resistor connected, followed by sampling of the IO0 and IO1 to configure the short address. If the bit field value has already been updated in the non-volatile storage, then the device shall automatically latch the pins, run the resistor decoder, and update the value in the [short address](#) register on power up.

The host controller must ensure that CONV_MODE_SEL[2:0] is set as '000b' when decoding the resistor address.

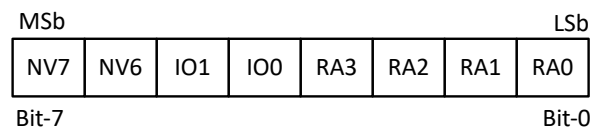


图 8-7. Combined IO and Resistor Address

This mode is useful when the application requires placing up to 64 devices on a single PCB, as it allows for easy expansion using a combined approach of IO and resistor decoding while enabling IO2 and IO3 to function as general-purpose input and output pins. This mode may also be used for position identification as no two devices may have the same short address.

备注

If the IO0 or IO1 pins are used in output mode, then the respective value shall be latched as '0'.

8.3.9 CRC Generation

The TMP1827 implements a cyclic redundancy check (CRC) mechanism for data integrity check and communication robustness. 表 8-4 lists the properties of a 8-bit CRC.

表 8-4. CRC-8 Rule

CRC-8 Rule	Attributes
CRC width	8 bits
CRC polynomial	$x^8 + x^5 + x^4 + 1$ (0x31)
Initial seed value	00h
Input data reflected	Yes
Output data reflected	Yes
XOR value	00h

When a new transaction is done, the shift register is initialized with the seed value of 00h and the data is shifted in LSB first. The CRC result is always part of the 64-bit unique address and is computed on the 56-bits that precede it. Additionally, when the host writes to the scratchpad-1 for the registers and scratchpad-2 for the memory, the device sends the CRC computed on the data bytes to provide a data integrity check for the host on the transaction. When the host reads the scratchpad-1 for reading the temperature register, the device shall append the CRC after the 8 bytes of scratchpad are sent.

The host must recalculate the CRC and compare it against the received CRC from the device. This is done by shifting the read data from the device along with CRC bits. If there is no bus error, then the shift register at the end of the bit shift will result in 00h. When writing the data to the device, the host must check the CRC received by processing the write data to ensure that there were no transmission errors and take appropriate corrective action before performing the next function.

8.3.10 Functional Register Map

The scratchpad-1 region and the IO register region together are referred to as the functional register map (see 图 8-8). The scratchpad-1 region is 16 bytes deep, and has temperature result, device status, device configuration, short address, temperature alert limit and temperature offset registers. The IO register region has the IO read and IO configuration registers. Some of the registers can be committed to the configuration EEPROM to ensure that the device settings are restored on power up without the host rewriting the configuration.

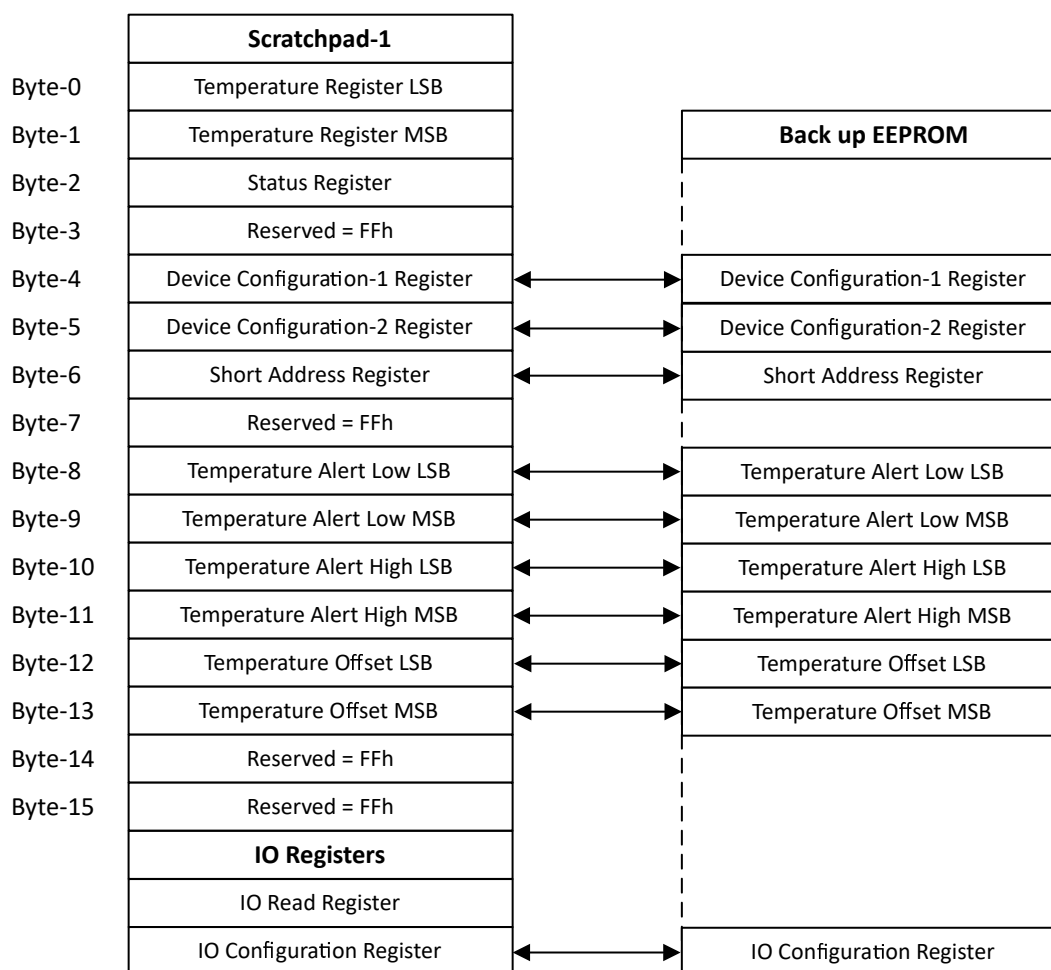


图 8-8. Functional Register Map (Scratchpad-1)

8.3.11 User Memory Map

The EEPROM memory is organized as 8 pages of 4 blocks each. 图 8-9 shows that each block is 8 bytes or 64 bits. This results in a total user memory of 2048 bits. All memory access to the device shall be increments of a block size of 8 bytes. Access to the memory for programming is done through the scratchpad-2 register. The host writes to the scratchpad-2 register, which allows the device to perform a read before committing the content to the memory.

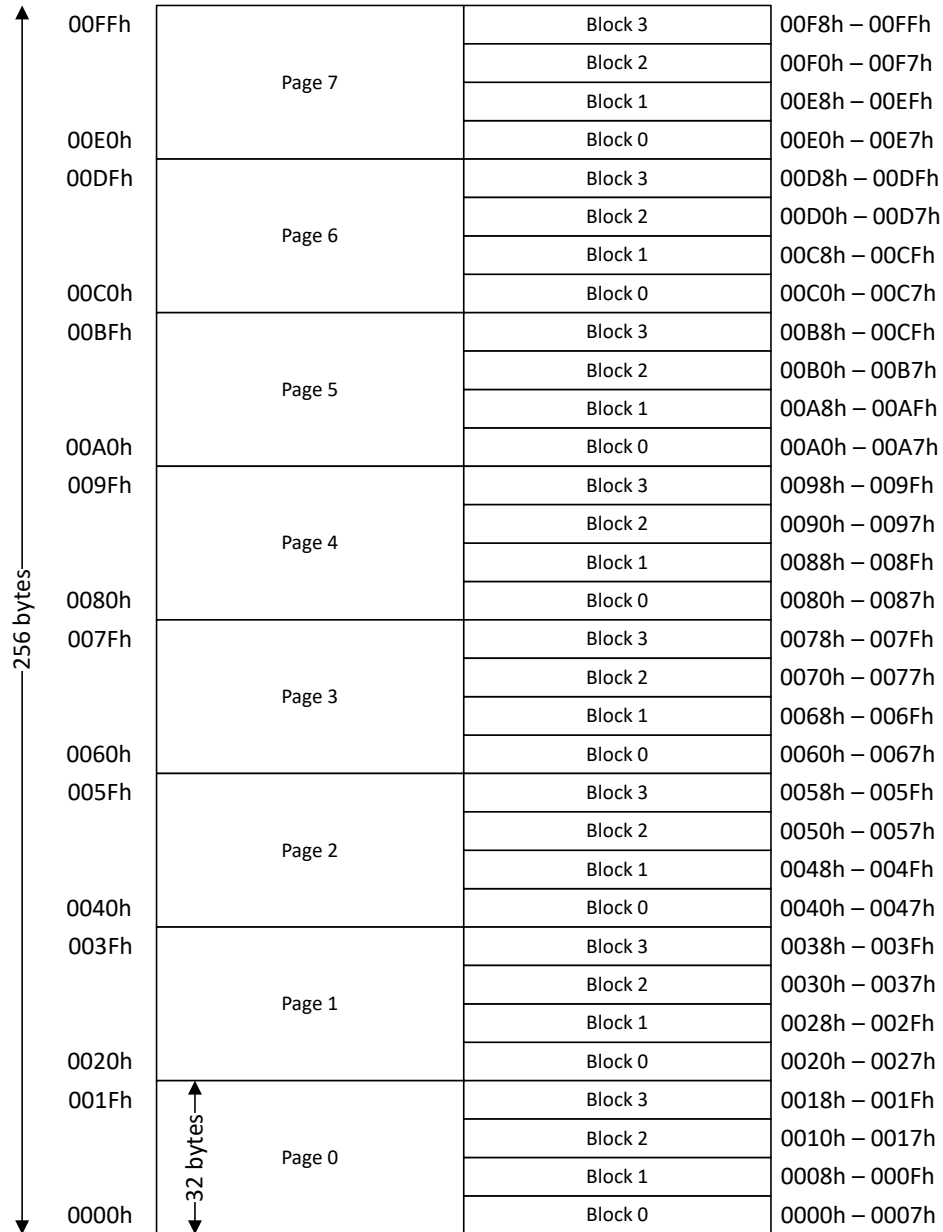


图 8-9. Address to EEPROM Page and Block Map

备注

The device shall return "1" for any device read without a CRC if the address is outside the user memory map.

8.3.12 SHA-256-HMAC Authentication Block

The authentication block on the TMP1827 device uses a keyed-hash message authentication code (HMAC) which is FIPS PUB-198-1 compliant SHA-256 hash implementation. The SHA-256 implementation itself is FIPS PUB-180-4 compliant. The HMAC engine does not encrypt the data, but generates a 256-bit hash based on the user programmed keys.

For details on SHA-256-HMAC authentication block, refer to the [TMP1827 Security Programming Guide](#).

8.3.13 Bit Communication

The single-wire interface communication does not have a reference clock, therefore all communication is performed asynchronously with fixed time slot (t_{SLOT}) and variable pulse width to indicate logic '0' and '1'. In idle state, the external pullup resistor holds the line high. All bit communication, whether it is a write or a read, are initiated by the host by driving the data line low to generate a falling edge and the bit value is decoded as the time for which the data line is held low or high after the falling edge.

Even though the communication is one bit at a time, the data exchanged between the host and device is performed at byte boundary. Every byte is sent least significant bit first. The device behavior is not ensured when incomplete bytes are sent.

8.3.13.1 Host Write, Device Read

A host write is the means by which the host sends the command, function, and data to the devices. A host write starts by the host driving the data line low as shown in Figure 8-10. If the host intends to transmit a logic '1', the line is released after t_{WR1L} time. If the host intends to transmit a logic '0', the line is released after t_{WR0L} . After releasing the data, the pullup resistor causes the line to become high till the beginning of the next time slot. The device samples the line after t_{RDV} has elapsed from the falling edge, for a time frame indicated by t_{DSW} . The host must factor the rise time due to the pullup resistor and bus capacitance to determine the release of the data line before the line is sampled by the device and the host drives the next write bit time slot.

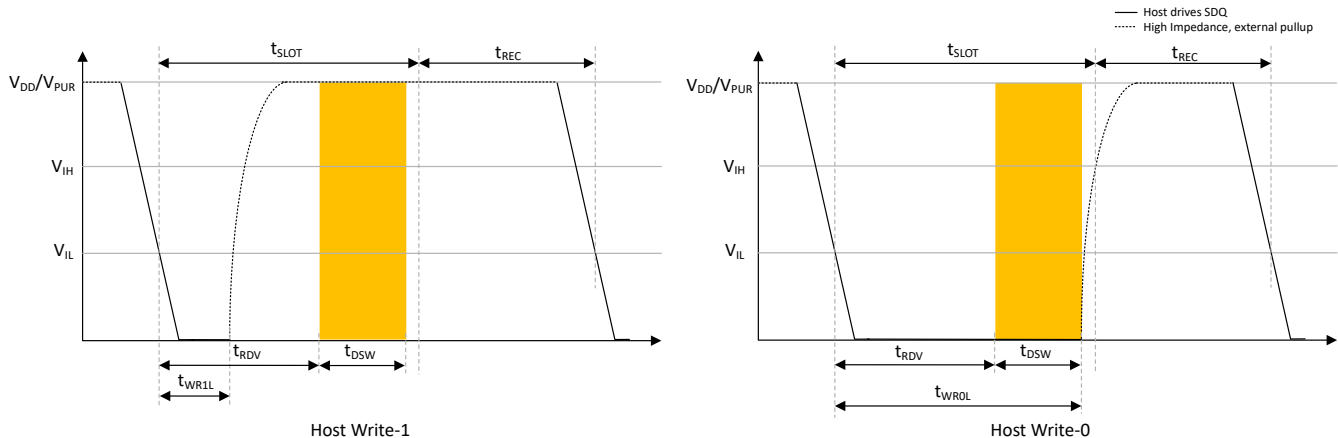


图 8-10. Host Write, Device Read

8.3.13.2 Host Read, Device Write

A host read is the means by which the hosts gets the data from the device or the CRC for data integrity check. A host read starts by the host driving the data line low as shown in Figure 8-11. When the device detects the falling edge, the device can drive the line low before the time t_{RL} . The host can release the bus from the side after the time $t_{\text{RL(MIN)}}$ elapses. If the device intends to transmit a logic '1', then the bus is released before $t_{\text{RL(MAX)}}$ elapses. If the device intends to transmit a logic '0', then the bus is released after $t_{\text{SLOT(MIN)}}$. The host must sample the line after the time t_{RWAIT} , for a time frame indicated by t_{MSW} . The host must factor the rise time due to the pullup resistor and bus capacitance to determine the sampling window for the host to sample the bit level sent by the device or to drive the next read bit time slot.

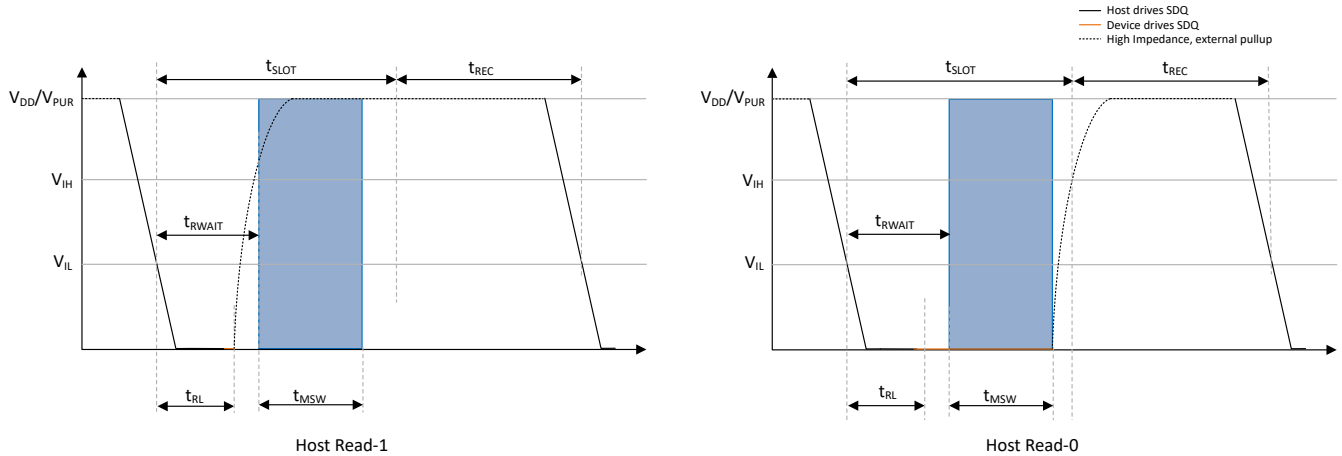


图 8-11. Host Read, Device Write

8.3.14 Bus Speed

The device supports both standard speed (8.33 kbps) and overdrive speed (90 kbps) data rates. All devices are factory programmed to start in overdrive speed, to enable higher data throughput. If the host requires the device to operate at standard speed, then it can easily switch the device by issuing a standard speed bus reset. The seamless switch over allows host to leverage better data rates on new designs, while maintaining backward compatibility for older design.

Additionally, the device also provides the flexibility to switch from standard to overdrive speed mode using address phase commands of OVD SKIPADDR and OVD MATCHADDR.

- When host issues OVD SKIPADDR, then all devices on the bus switch from standard speed to overdrive speed.
- When host issues OVD MATCHADDR, then the device whose 64-bit device address matches the address that host sends, will switch from standard to overdrive speed.

8.3.15 NIST 可追溯性

使用符合 ISO/IEC 17025 政策和程序的经认证实验室校准的设备对温度测试精度进行了验证。每款器件都经过测试和微调，确保满足其各自的数据表规格限值。

8.4 Device Functional Modes

The TMP1827 device features flexible temperature conversion modes along with robust user EEPROM architecture, which is described in the sections below.

8.4.1 Conversion Modes

The TMP1827 supports both one-shot and continuous conversion modes. There are different methods for one-shot conversion modes, that may be used based on single device or multiple device bus network. The continuous conversion mode is only supported in V_{DD} powered mode. Each of the conversion modes are with single temperature sample, but the host can enable 8 samples averages in the device for improved accuracy.

8.4.1.1 Basic One-Shot Conversion Mode

The basic one-shot conversion mode is the default conversion mode. The device goes through a bus reset, address and function phase to initiate the temperature conversion. During the communication, the device is in shutdown mode. When the conversion request is registered by the device, the device starts active conversion and then goes back to low power shutdown mode as shown in 图 8-12. If the device is in continuous conversion mode, then the one-shot conversion mode request is ignored.

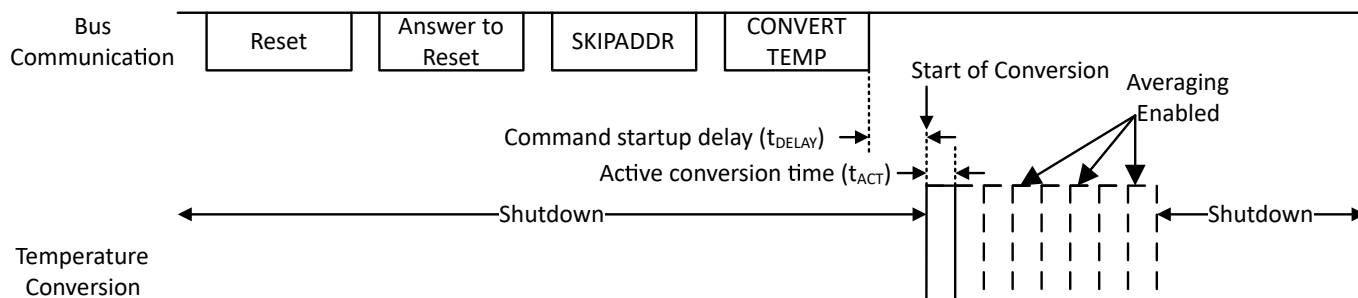


图 8-12. One-Shot Conversion Mode

As shown in 图 8-13, there is no change in how one-shot conversion is performed when there are multiple devices on the bus. However, as there are multiple devices, the combined current drain in bus powered mode of operation may cause the bus voltage to drop. In such use cases, it is required that the host implement a low impedance current path using a FET/transistor switch. This path is switched on so as to meet the current requirement of the bus during an active conversion and after the active conversion duration is complete, it is switched off for bus communication.

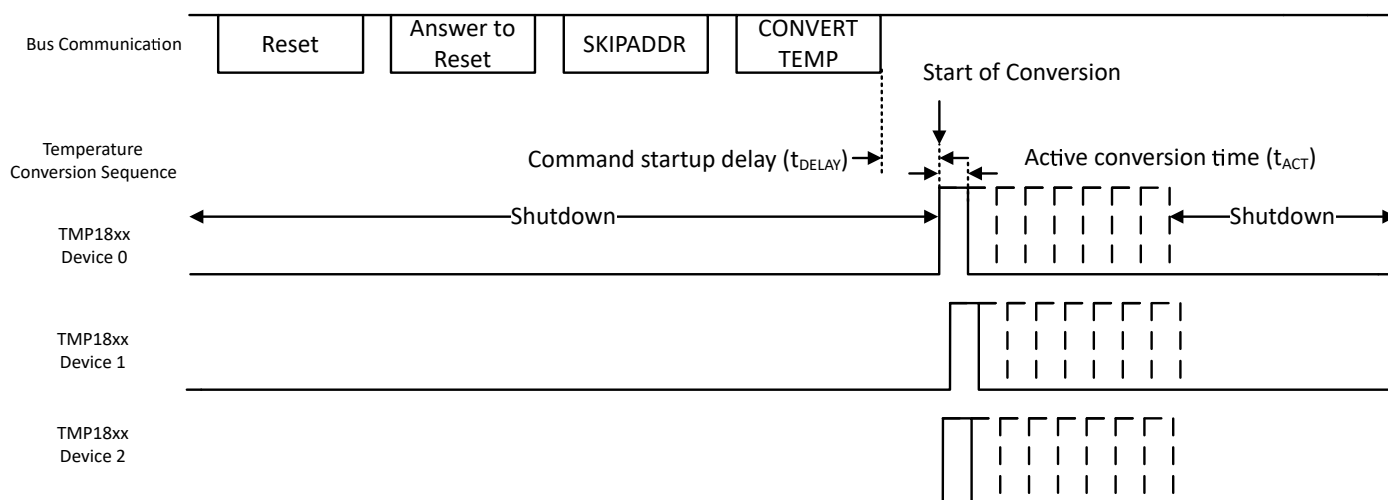


图 8-13. Multiple Device One-Shot Conversion Mode

8.4.1.2 Auto Conversion Mode

The auto conversion mode is a programmable feature in bus powered mode that can be enabled by setting the CONV_MODE_SEL as '10b' in the [device configuration-1](#) register. As shown in [图 8-14](#), the host can skip the issue of the temperature conversion request and directly read the temperature data from the device when the auto conversion mode is enabled. This enables the application to speed up the temperature conversion and read, because the request command is no longer required. As in the case for multiple device bus, a low impedance current path is required to meet the current requirement of the bus during the active conversions.

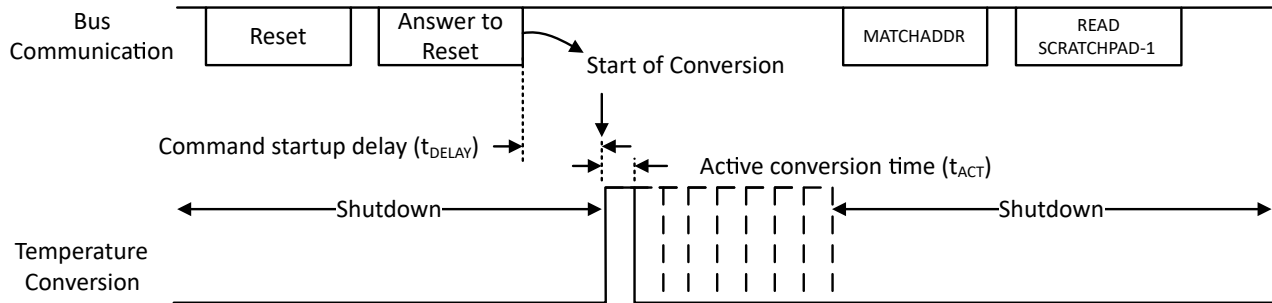
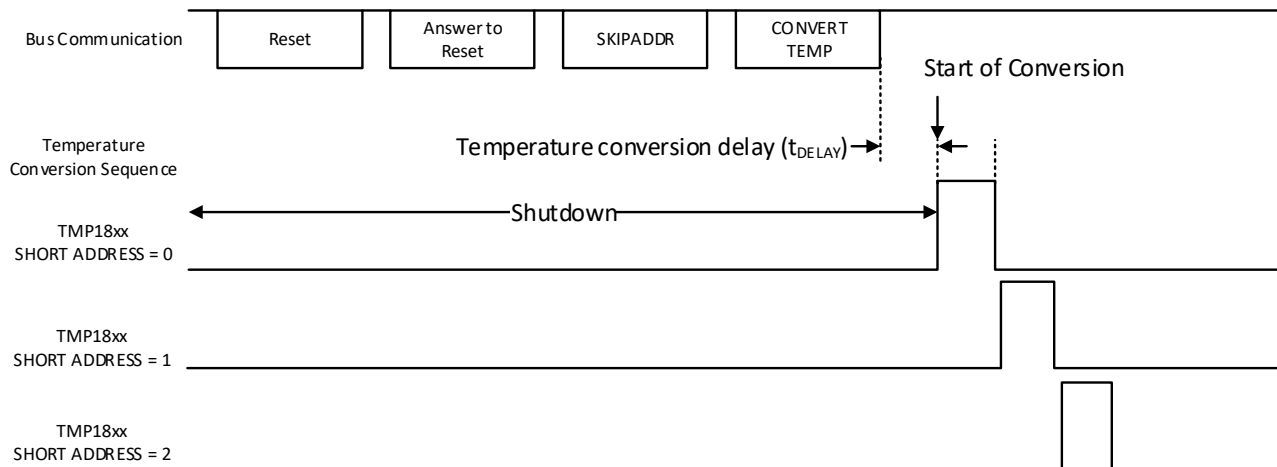


图 8-14. Auto Conversion Mode

8.4.1.3 Stacked Conversion Mode

The stacked conversion mode is a programmable feature in bus powered mode that can be enabled by setting CONV_MODE_SEL as '01b' in the [device configuration-1](#) register. As shown in [图 8-15](#), the devices can use the address programmed in the [short address](#) register to delay the temperature conversion for the devices when the stacked conversion mode is enabled. No more than two devices are actively converting at any given time, therefore the current drain in bus powered configuration is limited. This allows the application to avoid simultaneous temperature conversion by multiple parts and reducing the user system maximal supply current.



备注

The host controller must program all the device with the same setting for CONV_TIME_SEL and AVG_SEL to ensure that no more than two devices are actively converting to use the feature as it is intended.

图 8-15. Stacked Conversion Mode

8.4.1.4 Continuous Conversion Mode

The continuous conversion mode is applicable only in V_{DD} powered mode of operation for the device. This mode can be enabled by writing a value other than '000b' to CONV_MODE_SEL bits in the [device configuration-1](#)

register. As shown in 图 8-16, the device can perform periodic conversions at the interval programmed by the host and updates the temperature result register when continuous conversion mode is enabled. The device also performs the alert threshold check and sets the flags and alert pin, if configured accordingly. When in continuous conversion mode, the [CONVERTTEMP](#) function has no effect on the temperature conversion request. The application can at any time change the rate of conversion or put the device back into one-shot conversion mode, and this takes effect only after the current conversion is complete.

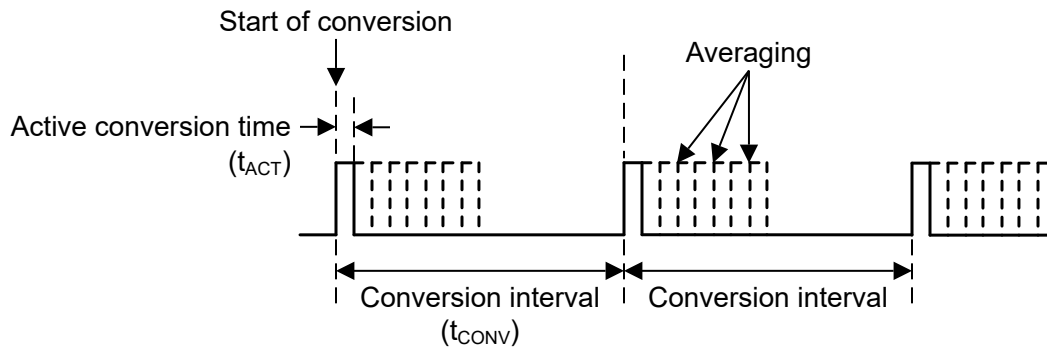


图 8-16. Continuous Conversion Mode

If due to any reason, the V_{DD} supply fails without the device going through a brown out, causing the device to move to bus powered mode of operation, the conversion mode automatically reverts to the setting in the configuration EEPROM.

8.4.2 Alert Function

As described earlier, the built-in alert function can be used by the host to check if the temperature has crossed a certain threshold. The alert status bits are available in both bus powered and V_{DD} powered mode. The alert pin is available only in V_{DD} powered mode.

If the device is in V_{DD} powered mode and $IO2/\overline{ALERT}$ is configured to function as an $IO2/\overline{ALERT}$ pin, then the pin shall be driven active low when the threshold crossing occurs. The pin is open-drain, and therefore requires a pullup resistor. The $IO2/\overline{ALERT}$ pin deassertion is based on the setting of the `ALERT_MODE` setting in the [device configuration-1](#) register.

8.4.2.1 Alert Mode

The device operates in alert mode, when the `ALERT_MODE` is set as '0b'. In the alert mode of operation, the alert status flag and $IO2/\overline{ALERT}$ pin are asserted when the last temperature conversion is either higher than the temperature alert high limit or when it is lower than the temperature alert low limit register.

The alert status flag and IO2/ALERT pin are deasserted only when the host reads the status register or performs a successful ALERTSEARCH command as shown in 图 8-17.

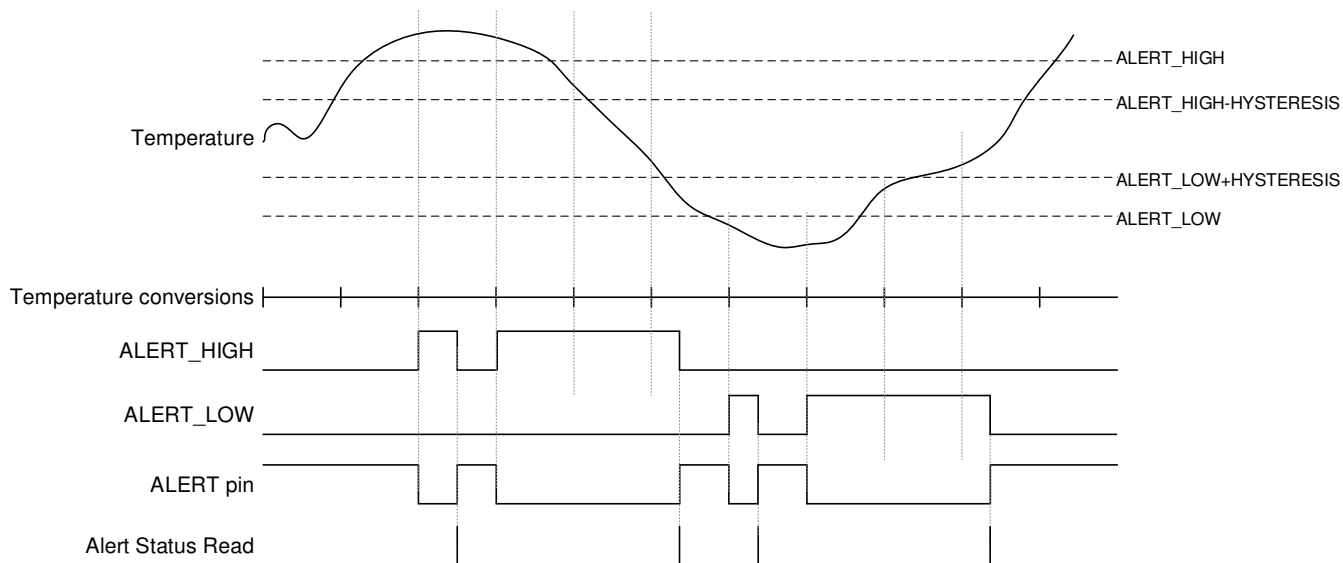


图 8-17. Alert Mode Timing Diagram

8.4.2.2 Comparator Mode

The device operates in comparator mode, when the ALERT_MODE is set as '1b'. In the alert mode of operation, the alert status flag and IO2/ALERT pin are asserted when the last temperature conversion is either higher than the temperature alert high limit or when it is lower than the temperature alert low limit register.

The alert status flag and IO2/ALERT pin are deasserted only when the result of the last temperature conversion is less than the temperature alert high limit minus the hysteresis or above the temperature low limit plus the hysteresis as shown in 图 8-18. The hysteresis is selectable using the HYSTERESIS bit field in the device configuration-2 register.

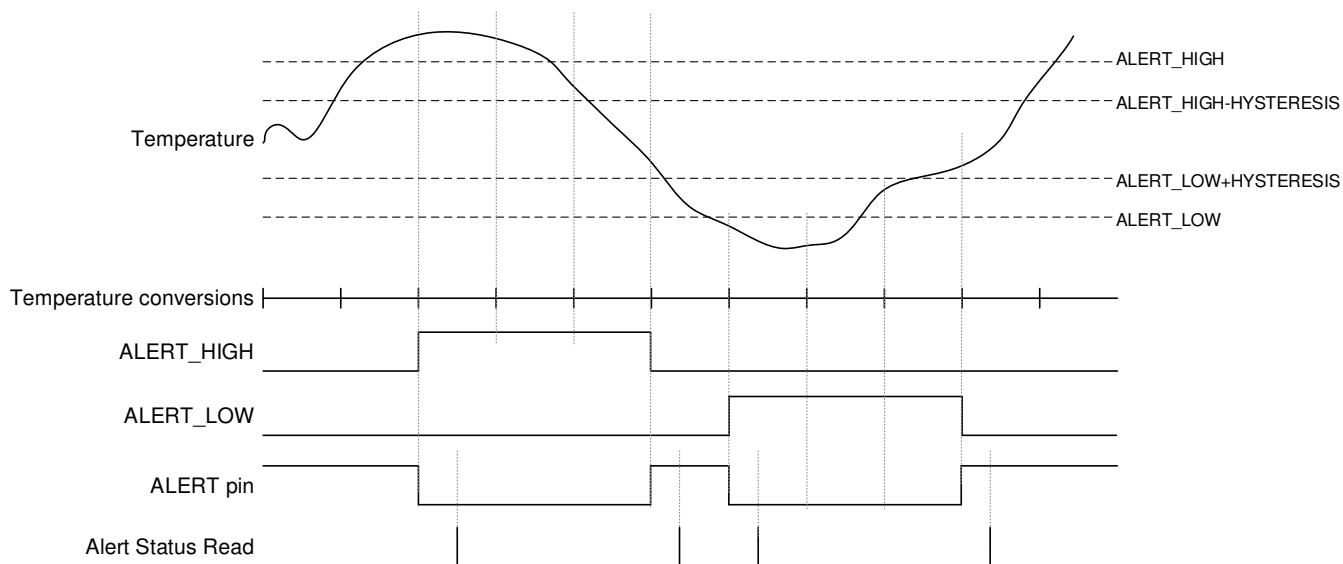


图 8-18. Comparator Mode Timing Diagram

8.4.3 Single-Wire Interface Communication

To leverage the features effectively, the device access consists of 3 distinct phases. As shown in 图 8-19, any bus communication starts with a bus reset condition to which every device on the bus must respond. This is followed by a highly configurable address phase, where the host selects the device it wants to access. Finally, there is a function phase where the host provides the selected device(s) the action it wants to take.

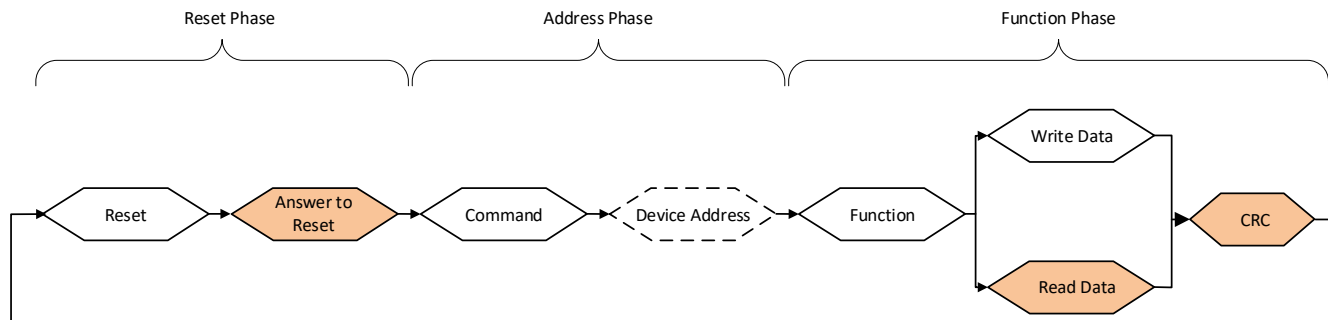


图 8-19. Single-Wire Bus Communication

In a single-wire bus, all write and reads are initiated by the host except for the answer to reset which is initiated by the devices on the bus.

8.4.3.1 Bus Reset Phase

The bus reset phase is the beginning of the communication. The phase is initiated by the host by holding the single-wire data line low for a period t_{RSTL} . All devices on the bus, irrespective of their current state shall respond to the bus reset, by reinitializing their internal state and responding to the host initiated bus reset. The devices respond after a minimum of t_{PDH} , by holding the single-wire low for a time period of t_{RSTH} as shown in 图 7-1.

All devices are configured with the OD_EN bit set as '1' in the [device configuration-2](#) register. If the host sends a bus reset pulse of 48 μ s to 80 μ s, then only devices operating in overdrive speed shall respond to the bus reset pulse, while devices operating in standard mode shall continue to wait for a standard mode bus reset.

If the host sends a bus reset pulse of minimum t_{RSTL} for standard mode, the device shall reset the OD_EN bit to '0' and respond to the bus reset in standard mode. If the bus consists of mixed standard and overdrive speed devices, then sending a bus reset pulse in standard mode shall reset all devices to standard mode speed of operation.

It is illegal for the host to send the bus reset for a particular speed of operation and then communicate at the other speed mode. Also, if a bus reset pulse is sent which is greater than 80 μ s (but less than 480 μ s), then the device shall be reset, though the device operation is not ensured.

8.4.3.2 Address Phase

图 8-20 shows the address phase that follows the bus reset phase. During this phase, the host presents 8-bit commands which may be followed by either host sending a 64-bit device address, a 8-bit flexible address, or skipping the address. Some of the commands are used to discover the device address, while others are used to select the device.

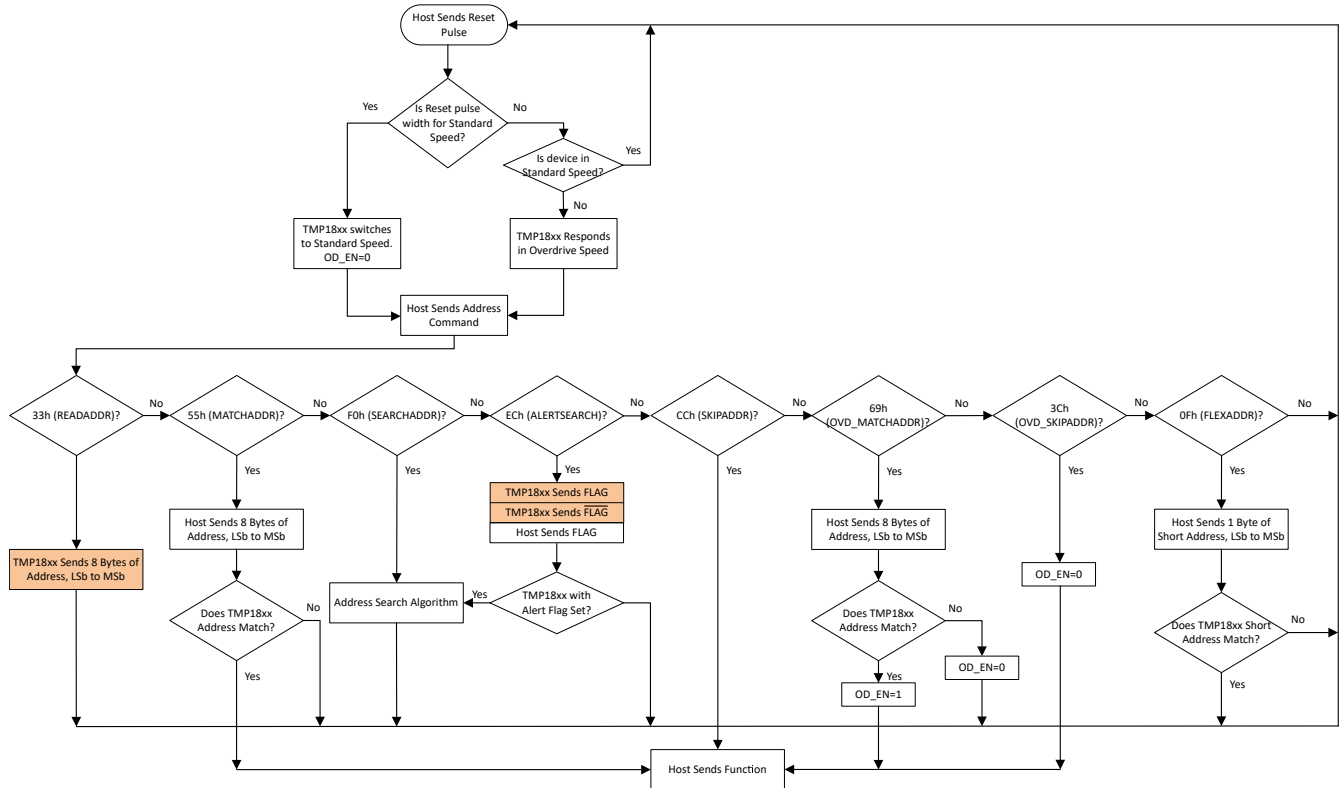


图 8-20. Address Phase Flowchart

8.4.3.2.1 READADDR (33h)

The command can be used by the host to read the 64-bit address of the device. This command must only be used when there is one device on the bus, as this command will cause a collision if multiple devices are present on the bus.

8.4.3.2.2 MATCHADDR (55h)

The command is used by the host and is followed by a 64-bit address that is used to select a single device on the bus. The address for each device is unique, therefore only one device can be selected by the command while all other devices continue to wait for a bus reset.

8.4.3.2.3 SEARCHADDR (F0h)

The command is used by the host to identify the 64-bit address of each of the devices on the bus after the system is powered up (see 图 8-21). Additionally, this command may be run by the host to discover any new devices that may be added to the system later. When there is a single device bus, the host can skip the command and instead use the SKIPADDR command to access the device.

As shown in right side flow of 图 8-21, when the fast arbitration mode is enabled by setting ARB_MODE bits as '11b' in the device configuration-2 register, the devices check the bus for the transmitted bit. If the device reads a bit value other than what they had transmitted, they no longer respond to the command until the next bus reset. A device that wins the bus continues until the 64th bit, after which it does not respond to the next SEARCHADDR command until the arbitration mode is reenabled. The arbitration function allows the host a fast discovery of the devices without having to go through the complicated, memory intensive and longer discovery method using traditional SEARCHADDR command. At the same time, if the host has an issue on the bus, then it can simply perform a broadcast write to disable and enable the arbitration mode to restart the fast arbitration mode.

The device also features an optimized arbitration mode which is enabled by setting ARB_MODE bits as '10b'. The devices check the transmitted bit, and if the devices detect a logic '0' when they send a logic '1', they do not participate in the SEARCHADDR command until the next SEARCHADDR command is sent. The device that is

able to send all 64 bits successfully, wins the bus and does not participate in the arbitration till the mode is reenabled. As a result of the optimized arbitration mode, the host does not have to manage the complex memory structure to identify devices on the bus and can still use the legacy software search algorithm.

When the host has received the address of each device on the bus, the host must disable the arbitration mode and only enable it again if the host wants to use the SEARCHADDR command again when new devices are added to an existing bus.

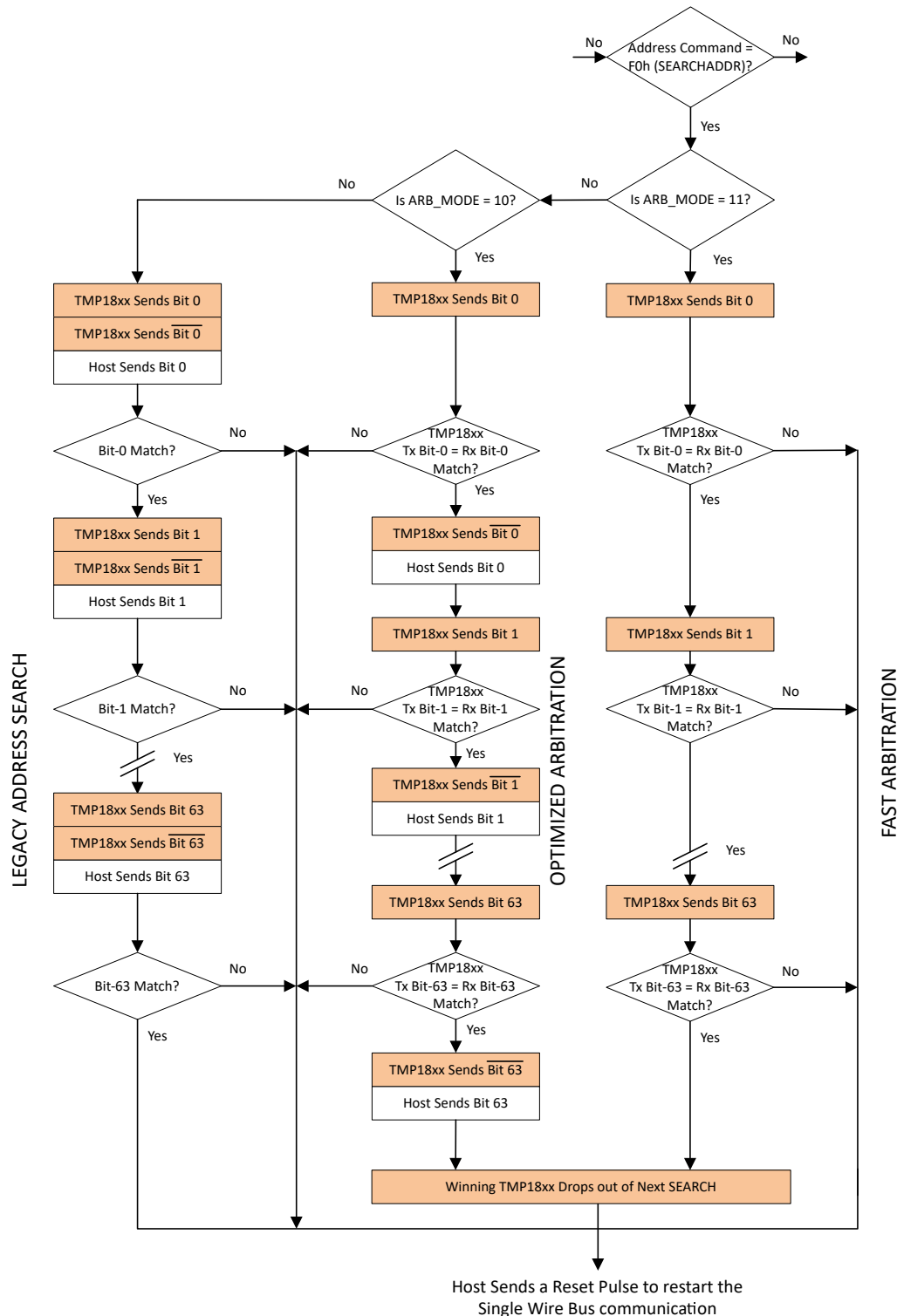


图 8-21. Address Search Algorithm Flowchart

8.4.3.2.4 ALERTSEARCH (ECh)

The command is used by the host to identify if any of the devices have an alarm condition that must be serviced. An alarm condition is set by the device when the temperature conversion is performed and the temperature result is higher than [alert high temperature](#) register or lower than [alert low temperature](#) register. The command uses the same method as the SEARCHADDR command, except that only devices with an alarm condition shall

respond. If none of the devices have an alarm condition, then the host shall get all '1' followed by '1' on the bus and host can send a bus reset subsequently. If the device sends a '1' followed by '0', the host shall interpret it as either one or more devices have an alert condition, or all devices have an alert condition. If there is a bus noise, that causes the line to be sample erroneously, but if no device has an alert condition, then the host shall get all '1' on the bus during the address search phase.

Only devices that have an alert set shall participate when they receive an ALERTSEARCH address command and shall respond by sending its 64-bit address. A device shall no longer participate in the send address phase if it successfully transmits the device address, which automatically clears the internal alert flags, unless another temperature conversion results in the alert condition getting set.

8.4.3.2.5 SKIPADDR (CCh)

The host can issue this command to select all the devices on the bus. This is useful when the host wants to write to the scratchpad-1 or trigger the temperature conversion for all the devices on the bus. Additionally, the host can use the command to increase the overall bus data throughput when there is a single device on the bus.

The host must take care to not issue the command when there are multiple devices on the bus. If the host intended to read the devices with this command, it would cause a collision on the bus.

8.4.3.2.6 OVD SKIPADDR (3Ch)

The host can issue this command to select all devices which support overdrive speed in a mixed speed bus. This is useful when the host wants to write to the scratchpad-1 or trigger the temperature conversion for all the devices on the bus that support overdrive speeds. Additionally, the host can use the command to increase the overall bus data throughput when there is a single device on the bus. When the command is issued, only devices that support overdrive mode shall set the internal OD flag as '1'.

The host must take care to not issue the command when there are multiple devices on the bus which support overdrive mode. If the host intended to read the devices with this command, it would cause a collision on the bus.

If the host issues a standard mode bus reset at any time, all devices which have OD flag set as '1' shall clear the same and revert back to standard mode speed.

8.4.3.2.7 OVD MATCHADDR (69h)

The command is used by the host and is followed by a 64-bit address that is used to select a single device on the bus in overdrive speed. The address for each device is unique, therefore only one device can be selected by the command while all other devices have to wait for a bus reset. The selected device shall set its internal OD flag as '1', and start all further communication in overdrive speed.

If the host issues a standard mode bus reset at any time, or selects another device using the OVD MATCHADDR, then all other devices which have OD flag set as '1' shall clear the same and revert back to standard mode speed.

8.4.3.2.8 FLEXADDR (0Fh)

The host issues the command to access a device by its short address that is configured in the [short address](#) register. The short address itself is decoded by:

- Setting FLEX_ADDR_MODE[1:0] as '01b', for hardware address configured by IO0-IO3 tie off to either V_{DD}/SDQ or GND.
- Setting FLEX_ADDR_MODE[1:0] as '10b', for resistor address by connecting a resistor between ADDR and GND.
- Setting FLEX_ADDR_MODE[1:0] as '11b', for combined IO and resistor address decoding.

Using the command does not affect the 64-bit unique address of the device. This command is followed by one byte, which is the short address of the device, the host wants to select for further communication.

8.4.3.3 Function Phase

[图 8-22](#), [图 8-23](#) 和 [图 8-24](#) show the function phase that follows the address phase. The host may present different functions during this phase, which is followed by either the host sending data to the device, reading

device data, or starting a temperature conversion. Some of the functions may be broadcast to all the devices on the bus using SKIPADDR or OVD SKIPADDR. Read functions must always be unicast with a device selected during the address phase using MATCHADDR, FLEXADDR or OVD MATCHADDR. For cases, where there is a single device on the bus, the device address selection may be skipped.

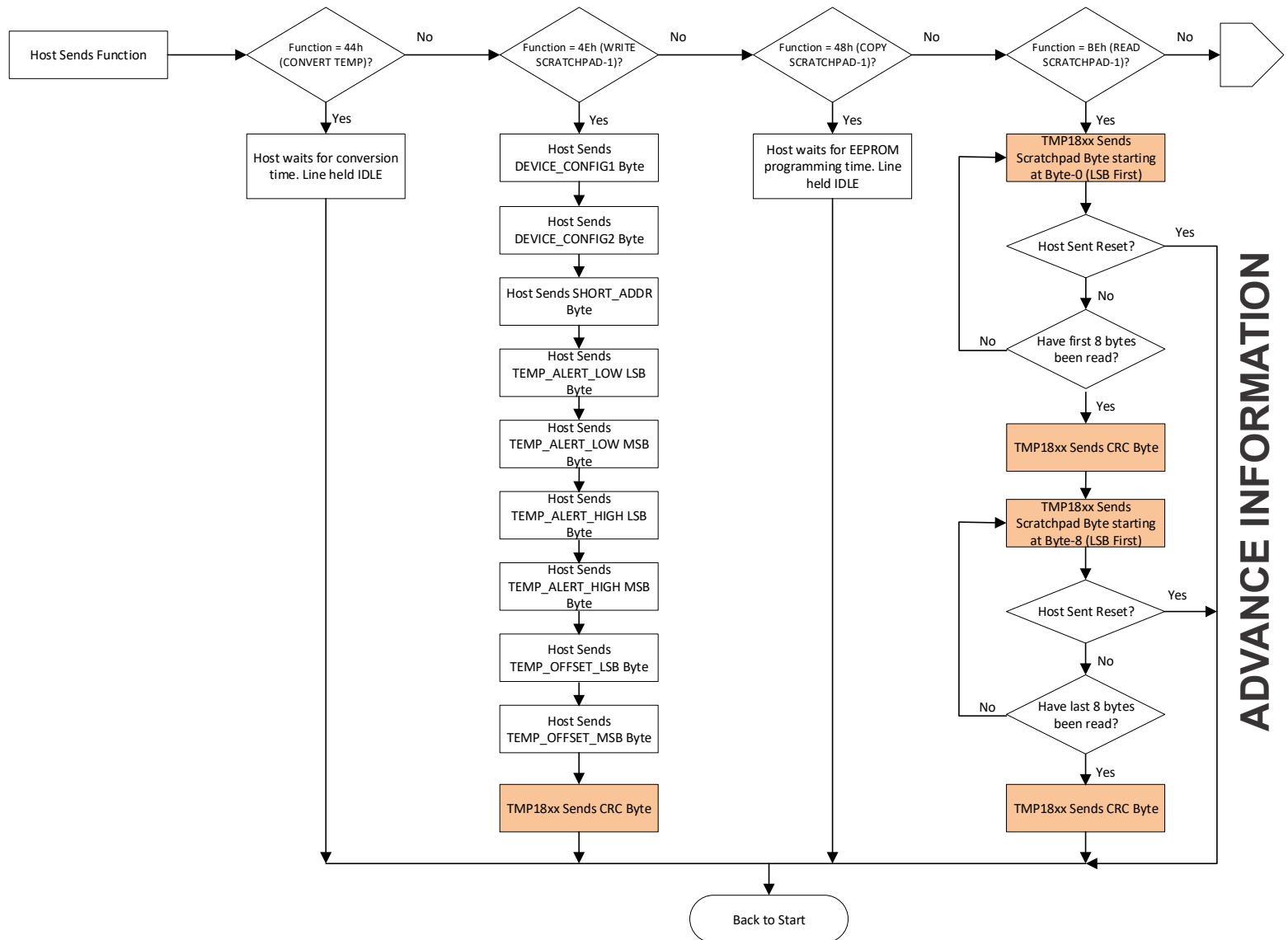


图 8-22. Function Phase Flowchart for Register Space

8.4.3.3.1 CONVERTTEMP (44h)

The function is issued by the host when the host wants the temperature sensors on the bus to perform a one-shot temperature conversion.

When the device is bus powered, the host must keep the bus idle for the duration of the active temperature conversion. The active temperature conversion time is dependent on the conversion mode. After temperature conversion has completed, the result is updated in [temperature result LSB](#) and [temperature result MSB](#) registers.

When automatic temperature conversion mode is enabled in the [device configuration-1](#) register, the command may be skipped altogether, allowing faster access to the temperature result.

8.4.3.3.2 WRITE SCRATCHPAD-1 (4Eh)

The function is issued by the host to write the functional register for the temperature sensor. Following the function byte, the host transmits the device configuration registers, short address register, temperature alert low limit registers, temperature alert high limit registers and temperature offset registers. After sending the 9 bytes, the device shall transmit the CRC computed on the 9 bytes and send the CRC back to the host for quick verification of data integrity.

Additionally, the host can issue a bus reset at any time during the transfer, though it is advised that the same may be done only at byte boundary to ensure that there is no register corrupted due to incomplete transfer.

When the FLEX_ADDR_MODE bits are updated as a non-zero value, the host must hold off on any communication to keep the bus in idle state for either t_{RESDET} or t_{DELAY} , as per the requested flex mode, to allow the device to decode and update the short address. Also when the FLEX_ADDR_MODE bits have a non-zero value, the byte for short address register shall not be updated in the register scratchpad, for any subsequent write scratchpad-1 operations, to avoid the overwrite of the decoded short address.

备注

When updating the OD_EN and/or LOCK_EN bit in the device configuration-2 register, the host controller must send the 9 bytes and wait for the CRC transmission before the change of device speed or write protection of the register scratchpad can take effect. If the host terminates the transfer before the complete CRC transmission, then any update to OD_EN and/or LOCK_EN shall not take effect.

8.4.3.3.3 READ SCRATCHPAD-1 (BEh)

The function is issued by the host to read the temperature result, status bits, and functional registers from the register scratchpad. The selected device transmits the first 8 bytes of the register scratchpad followed by CRC of the 8 bytes. If the host wants to continue the read operation, the host will receive the next 8 bytes along with CRC for the last 8 bytes. The host can terminate the function at any point by issuing a bus reset.

8.4.3.3.4 COPY SCRATCHPAD-1 (48h)

The function is issued by the host to copy the functional registers content to the EEPROM. As shown in 图 8-22, the temperature alert registers, configuration register, short address register, and temperature offset registers are stored in the configuration EEPROM. There are 9 bytes being copied from the register space to the NVM,

therefore the host must hold the bus in idle state for twice the EEPROM programming time before it performs the next access.

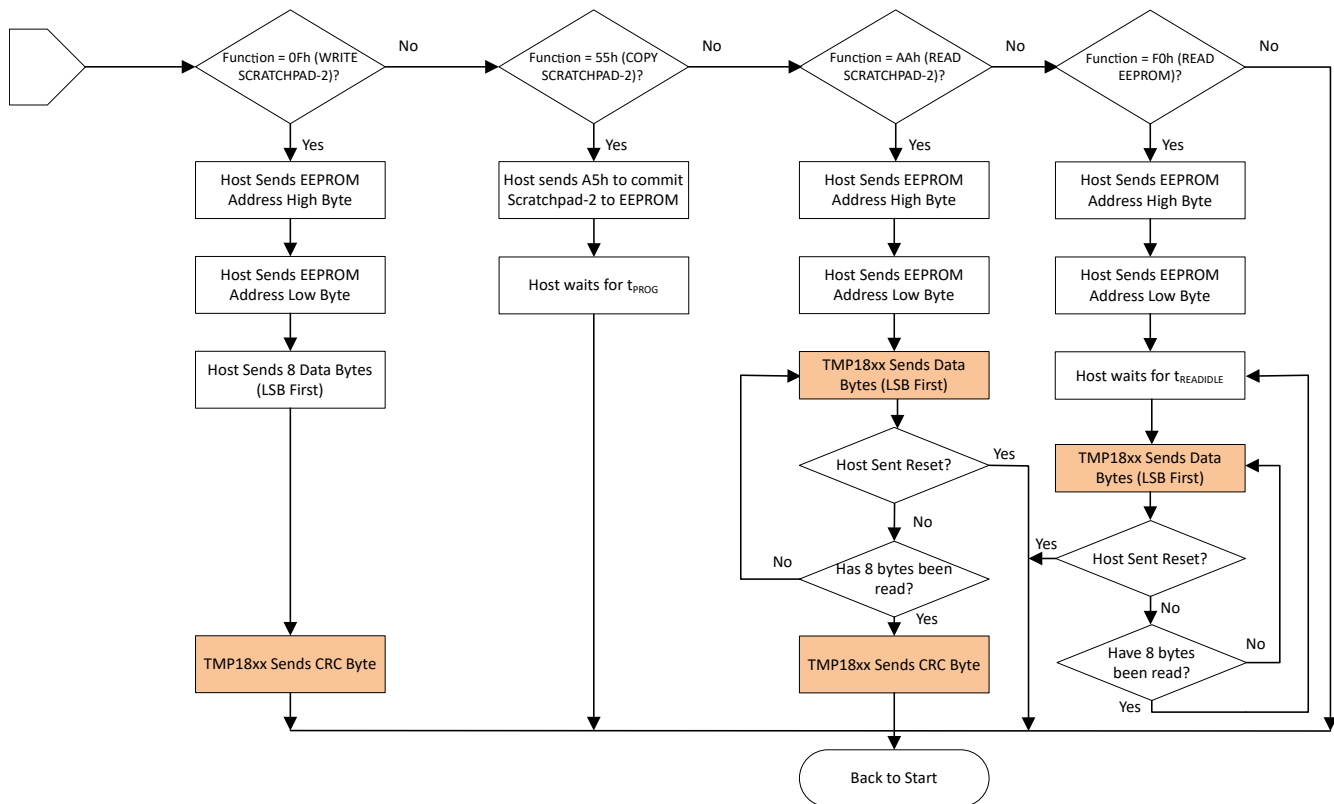


图 8-23. Function Phase Flowchart for Memory Access

8.4.3.3.5 WRITE SCRATCHPAD-2 (0Fh)

The function is issued by the host to prepare data write to the EEPROM using memory scratchpad.

图 8-23 shows that the host first sends 2 bytes for the EEPROM address, followed by 8 data bytes. On receiving the 8 data bytes, the device computes the CRC for total of 10 bytes of address and data received from the host for data integrity check. The function only copies the data to the memory scratchpad, to enable the host to change data, before the final EEPROM erase and program. Additionally, the host may use the memory scratchpad as a 8-byte volatile buffer.

The device does not support byte wise access for EEPROM. All access to the scratchpad are done in increments of 8 bytes. Hence the host must send the address at the 8-byte block boundary. 图 8-9 shows that any attempt to write data at a non-block boundary will result in data corruption for the corresponding EEPROM page and block.

8.4.3.3.6 READ SCRATCHPAD-2 (AAh)

The function is issued by the host to read the content of the memory scratchpad.

The host first sends the 2 bytes for the EEPROM address (see 图 8-23). If the 2 bytes of address matches the address sent during the last WRITE SCRATCHPAD-2, the device responds by sending the 8 bytes of data that was written to the scratchpad-2 buffer earlier. The host can send a bus reset any time during the transfer. If the device sends all 8 bytes and no bus reset is received, the device transmits the CRC computed on the 2 byte of address sent by the host and 8 bytes of data sent by the device to the host for data integrity check.

If there is a mismatch in the address, the device shall go back to the start and wait for a bus reset to restart communication, and the host shall receive '1' on the bus for any subsequent read. This mechanism ensures that

the host can detect an address byte corruption during both WRITE SCRATCHPAD-2 and READ SCRATCHPAD-2, as both the data bytes and CRC byte will read back as FFh.

8.4.3.3.7 COPY SCRATCHPAD-2 (55h)

The function is issued by the host to copy the contents of scratchpad-2 to the EEPROM. The EEPROM current is higher during the erase and program, therefore the application must size the external pullup resistor to ensure that there is sufficient current drawn by the multiple devices or implement a low impedance current path using an external FET/transistor switch parallel to the bus pullup resistor.

The host application must ensure that only WRITE SCRATCHPAD-2 or READ SCRATCHPAD-2, with address of the intended location in the user EEPROM, are issued before COPY SCRATCHPAD-2 is sent. The device stores and uses the address sent during WRITE SCRATCHPAD-2 to identify the location in the user EEPROM where the copy operation shall be performed. The host only needs to send one byte with A5h to initiate the copy of the memory content from scratchpad-2 to the user EEPROM, at the address location already specified, when performing the commit operation. The host must hold the bus in idle state for the EEPROM programming time before starting any new access on the bus.

8.4.3.3.8 READ EEPROM (F0h)

The function is issued by the host to read the EEPROM memory directly.

The host sends 2 bytes for the address of the EEPROM location, that it wants to read. The device then sends the data bytes starting from that location until the internal address pointer does not reach the end of the EEPROM or host does not issue a bus reset. If the internal address pointer reaches end of the EEPROM location, the device shall send 1's on the bus. After sending the 2 bytes for the address of the EEPROM location to access, and when moving between block boundary, the host must idle the bus for t_{IDLE} as specified in the EEPROM characteristics. Additionally, there is no CRC provided in the response from the device during the READ EEPROM function.

The device does not support byte wise access for EEPROM. All access to the memory is done in increments of 8 bytes. Hence the host must send the address at the 8-byte block boundary. If the address is sent for a non-block boundary, the device shall send data from the start of the corresponding block as shown in 图 8-9.

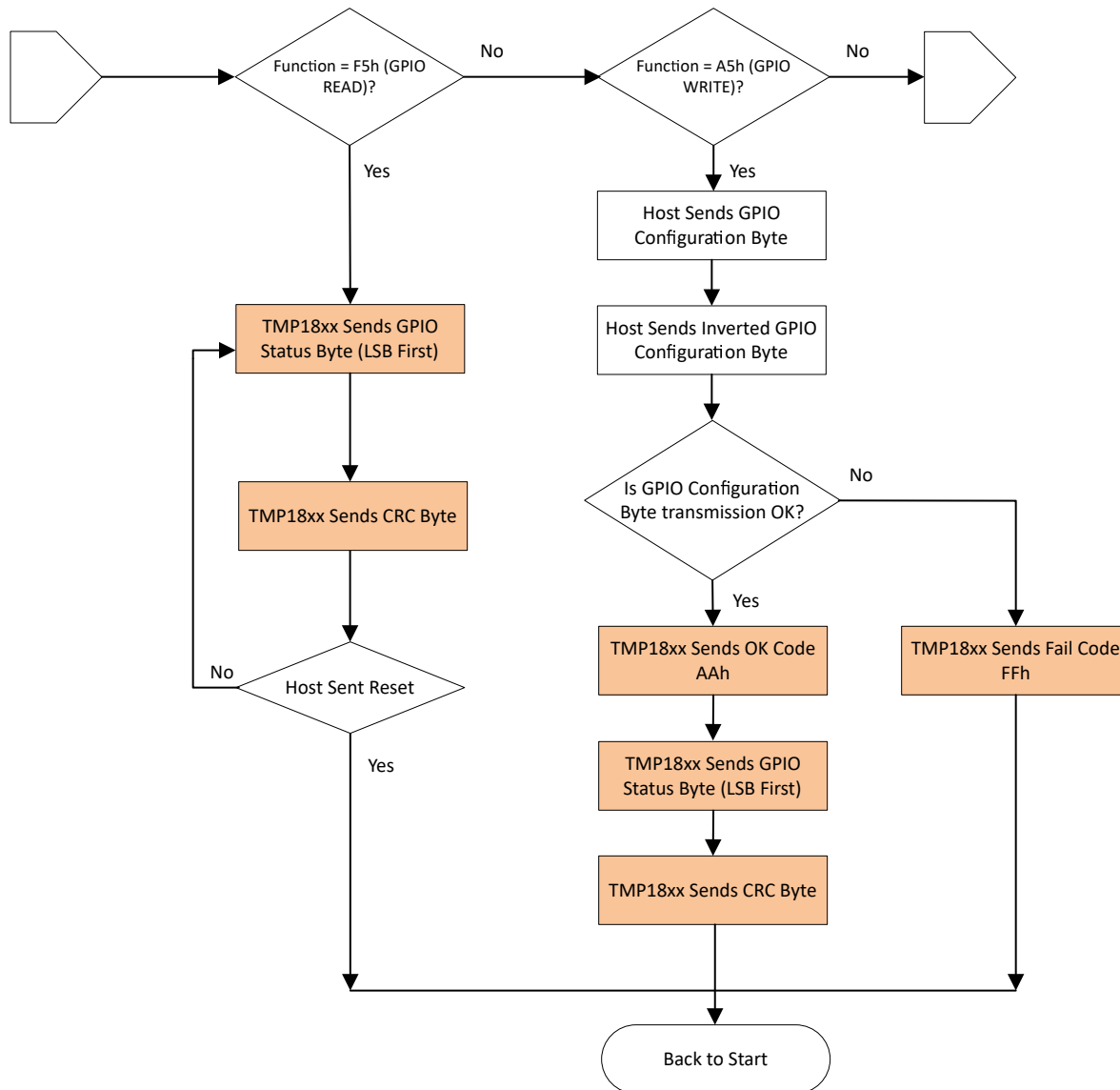


图 8-24. Function Phase Flowchart for IO Access

8.4.3.3.9 GPIO WRITE (A5h)

The function is issued by the host to configure and read the GPIO.

The host sends the **IO configuration** byte, followed by the inverted IO configuration byte value. This enables the device to check for bit error due to bus noise. If there errors detected, then the device shall transmit a fail code of FFh to the host, for the host to retry. If there are no errors detected, then the device shall transmit the success code of AAh. The host may issue a bus reset and terminate the transaction or may proceed to read of the IO state, where the device shall send the **IO read** byte, followed by the CRC byte for the IO status byte.

The host must send a bus reset to terminate the function and bring the device back to its idle state.

8.4.3.3.10 GPIO READ (F5h)

The function is issued by the host to read the GPIO.

After issuing the function, the device sends a byte which has the corresponding IO status, followed by the CRC for the IO status byte. The host may repeat the sequence or may send a bus reset to terminate the function.

8.4.4 NVM Operations

The TMP1827 device follows a common procedure for programming of keys, programming user data and enabling the memory protection for user data and keys.

8.4.4.1 Programming User Data

Programming of user data to the memory use the functions WRITE SCRATCHPAD-2, READ SCRATCHPAD-2 and COPY SCRATCHPAD-2 as described earlier. The application must use the address in the provided [functional memory map](#) to write user data to the device.

1. Host issues a bus reset, then waits for the response and sends the address command for the specific device.
2. Host issues a WRITE SCRATCHPAD-2 with the address as per the functional memory map and the 8 bytes of data.
3. Host issues a bus reset, then waits for the response and sends the address command for the specific device.
4. Host issues a READ SCRATCHPAD-2 with the address as per the functional memory map, then reads the 8 bytes of data to ensure that it is same as what was written in the earlier step.
5. Host issues a bus reset, then waits for the response and sends the address command for the specific device.
6. Host issues a COPY SCRATCHPAD-2 with the data bytes as A5h to commit the data to user EEPROM.

8.4.4.2 Register and Memory Protection

The TMP1827 provides user configurable protection for both the register scratchpad and the memory region as described below.

8.4.4.2.1 Register Protection

The device provides for a one-time write protection for the entire register map. All the writable registers, except for IO configuration, can be write-protected. To enable the write protection permanently, the host controller must set LOCK_EN bit in the [device configuration-2](#) register, then copy the register to the configuration EEPROM. When the configuration EEPROM is programmed, the change is permanent and irreversible.

Additionally, the device provides temporary write protection mechanism. If the LOCK_EN bit is not committed to configuration EEPROM, the device shall prevent any write to the register scratchpad-1 region as long as power is applied. If the device goes through a POR, then the LOCK_EN bit shall be cleared to allow the host to update the register scratchpad-1.

8.4.4.2.2 User Memory Protection

For additional details on user memory protection, refer to the [TMP1827 Security Programming Guide](#).

8.5 Programming

The TMP1827 has multiple methods in which an application can access the device functions for temperature conversion and EEPROM programming. When accessing multiple device the MATCHADDR command along with the 64-bit device address must be used. If the short address has been programmed uniquely, then the host may use the FLEXADDR command along with the 8-bit short address must be used.

The sections below describe the sequences that must be followed to access the device functions properly.

8.5.1 Single Device Temperature Conversion and Read

图 8-25 shows the program flow that the host MCU must execute for temperature conversion and subsequent read of the temperature result. As the temperature results are the first two bytes of the register scratchpad, the host may optionally stop the read after the device transmits the first two bytes by performing a bus reset.

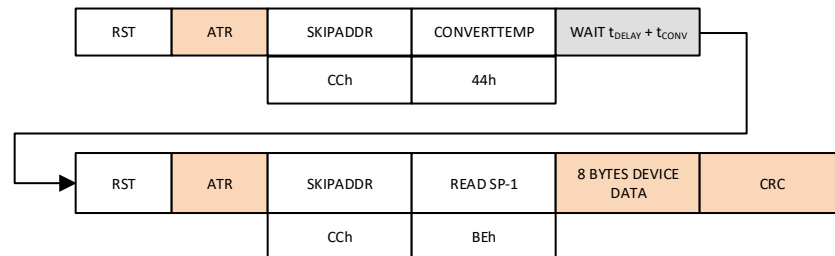


图 8-25. Single Device Temperature Conversion and Read Programming Flow

8.5.2 Multiple Device Temperature Conversion and Read

图 8-26 shows the program flow that the host MCU must execute for temperature conversion and subsequent read of the temperature result for multiple devices. The host must use the MATCHADDR command **or the FLEXADDR command** to address each device on the bus, because the devices do not arbitrate on a read function.

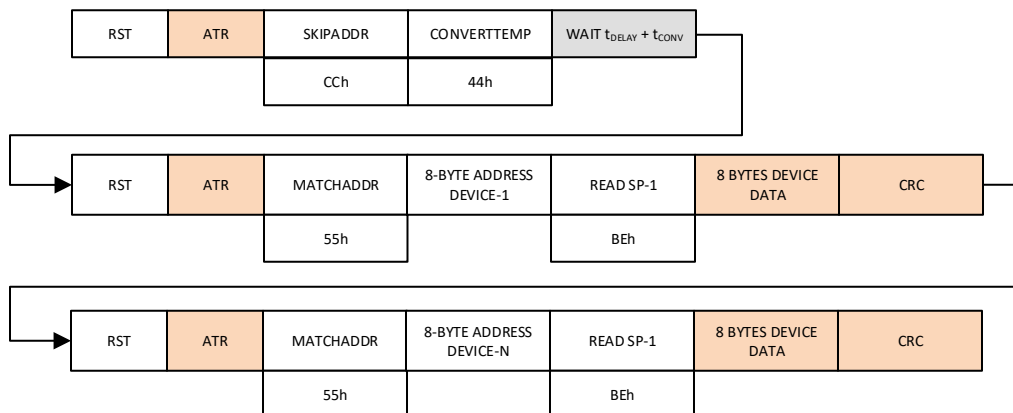


图 8-26. Multiple Device Temperature Conversion and Read Programming Flow

8.5.3 Register Scratchpad Update and Commit

图 8-27 shows the sequence the host must execute to update the register scratchpad and commit to the configuration EEPROM. The host must read the scratchpad to ensure it can perform the correct read modify write to the register locations, before it commits the same to the configuration EEPROM.

If the host has only one device, or if the application can guarantee no bus corruption, then it may use SKIPADDR command to globally update and commit the register scratchpad region. However once committed and locked, it is not possible for the host to update the locations anymore, and hence TI strongly advises that the host still read the locations before running the commit operation.

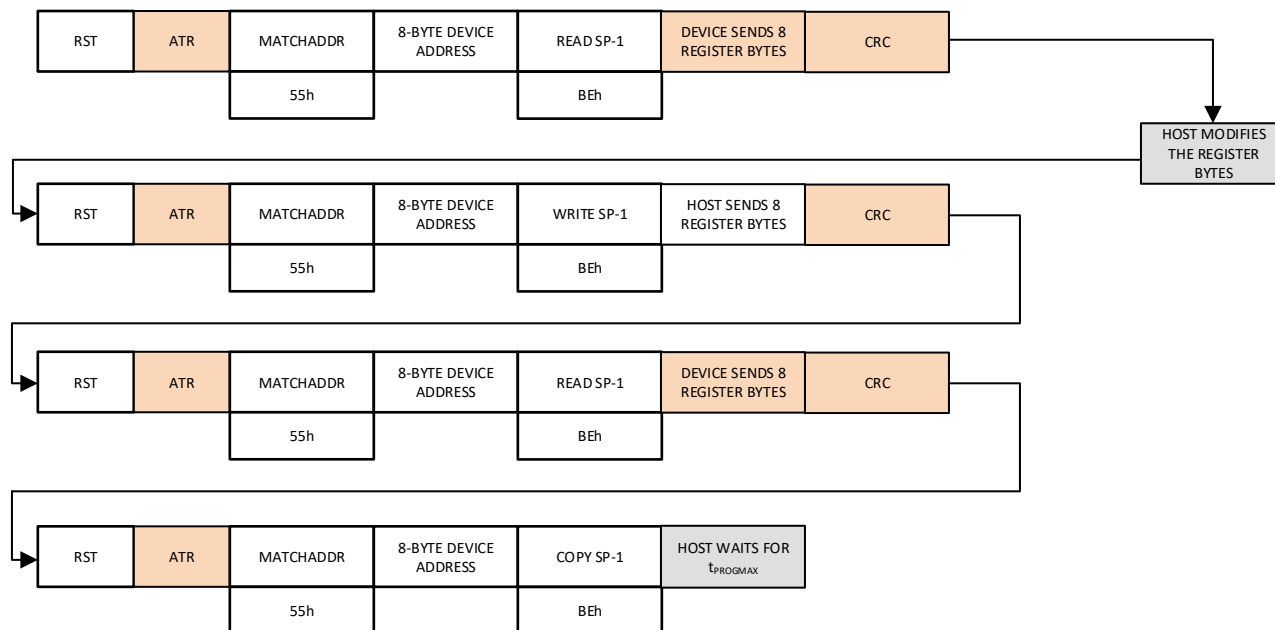


图 8-27. Register Scratchpad Update and Commit Programming Flow

8.5.4 Single Device EEPROM Programming and Verify

图 8-28 shows the correct procedure the host must execute to update the EEPROM. When communicating with a single device, the host may use the SKIPADDR command. However when communicating with multiple devices, the host must use the MATCHADDR command or the FLEXADDR command to address the correct device. The host writes to the EEPROM scratchpad first, then reads it back to verify the content before it commits the same to the user EEPROM. Once verified the copy command is issued with the qualifier byte A5h and the bus is held idle for the duration of erase and program of the EEPROM. The host shall repeat the sequence for every 8 byte page. After the locations are programmed, the host may issue an READ EEPROM function with the start address to read all the bytes. The device shall read back the bytes in page size and put a CRC byte after every page to ensure that the host shall be able to identify bit corruption using the CRC over a smaller data packet.

As long as the host continues the read operation, the device shall read back 8 bytes of data followed by a CRC byte. When the device reaches the end of the EEPROM block, the device shall return all 1's to the host.

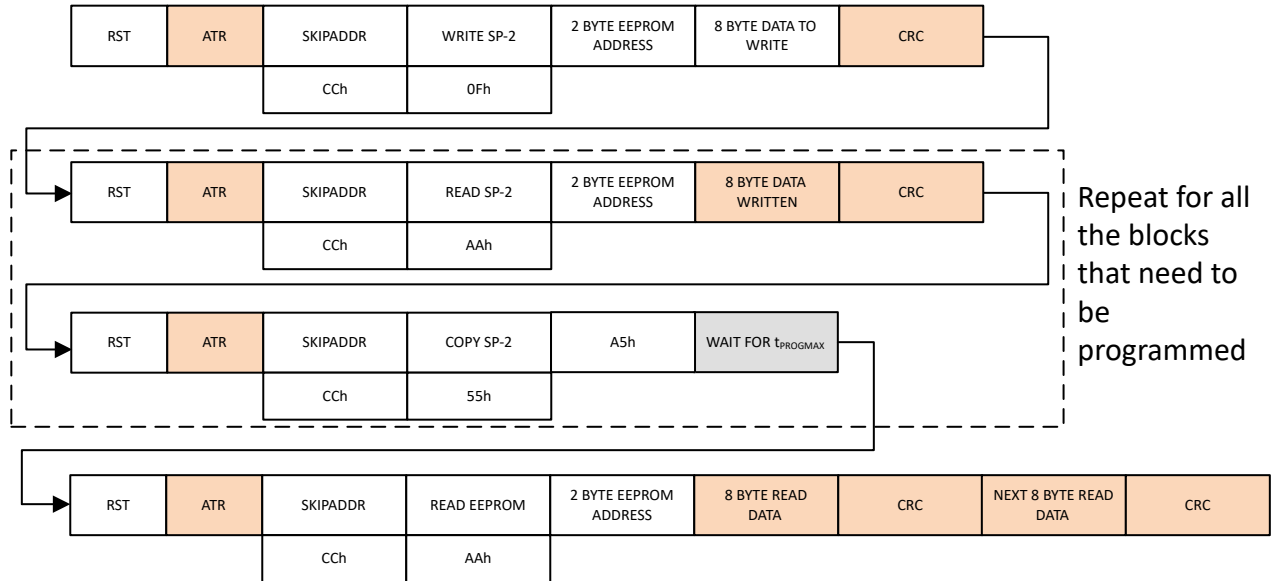


图 8-28. Single Device EEPROM Programming and Verify Flow

8.5.5 Single Device EEPROM Lock Operation

When the device EEPROM is successfully programmed as shown in 图 8-28, the host shall execute the sequence, as shown in 图 8-29, to write-protect the EEPROM block.

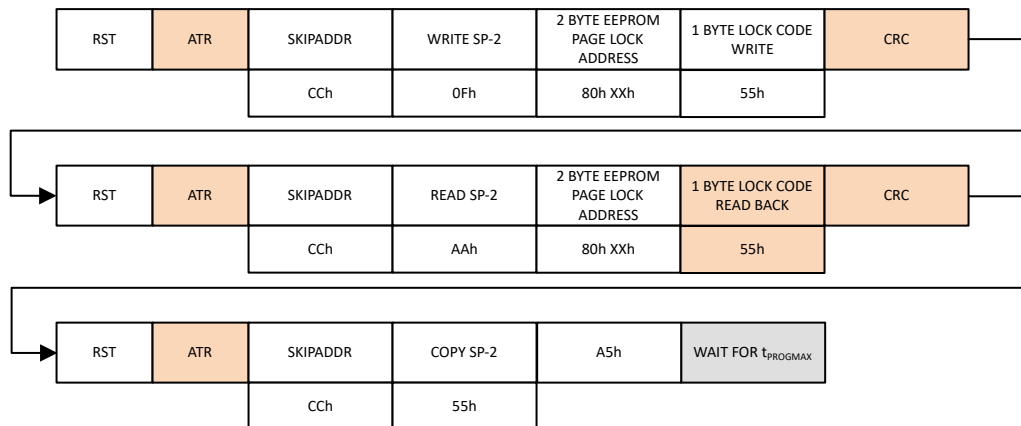


图 8-29. Single Device EEPROM Lock Operation Flow

8.5.6 Multiple Device IO Read

图 8-30 shows the program flow that the host MCU must execute for reading the IO from a device. The host selects the device it wants to communicate with and issues the GPIO READ function. The host must wait for the time it takes for the device to sample the IO, by keeping the bus idle, before the device returns the **IO read** register value along with the CRC for the byte. The device at this point shall again sample the IOs. If the host issues a bus reset during the sampling time, the device shall terminate the update process and it will hold the last sampled value. If the host continues, then the new sampled values shall be sent back by the device.

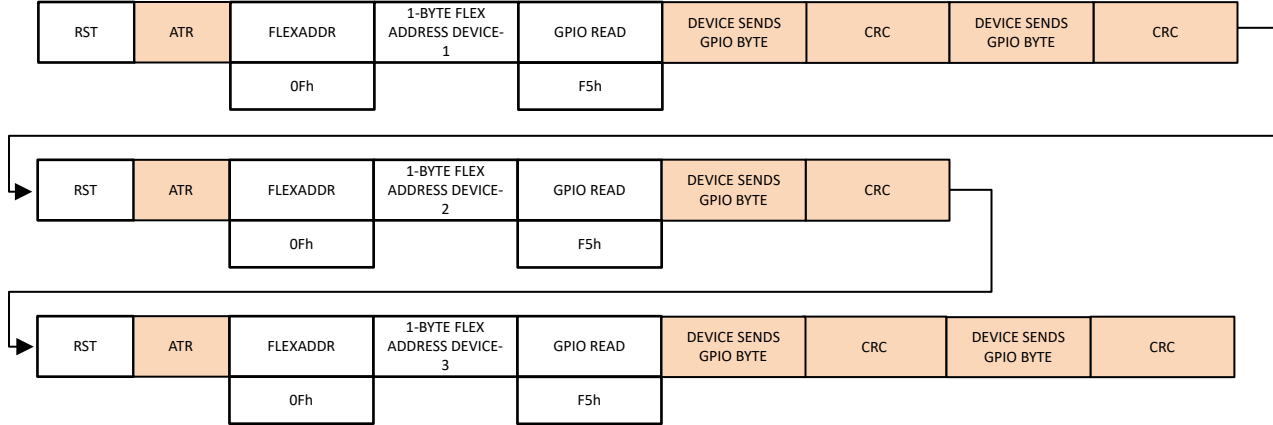


图 8-30. Multiple Device GPIO Read Flow

8.5.7 Multiple Device IO Write and Read

图 8-31 shows the program flow that the host MCU must execute for configuring the and reading the IO from a device. The host selects the device it wants to communicate with and issues the GPIO WRITE function. The host shall then send the **IO configuration** register followed by an inverted value, that allows the device to check for any bus transmission error. If the host receives a return code any other than AAh, it must terminate the transaction by sending a bus reset. When the host gets the return code of AAh from the device, it shall wait for the device to sample the bus and then read back the **IO read** register along with a CRC. If the host plans to read the device continuously, then it must send a bus reset and initiate a GPIO READ function.

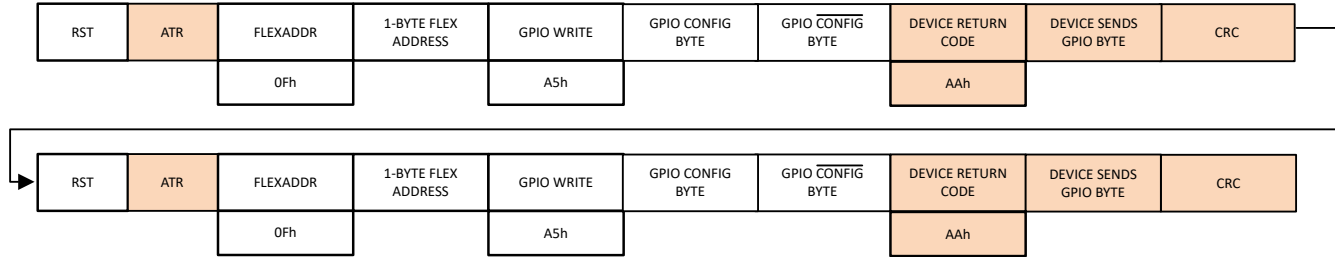


图 8-31. Multiple Device GPIO Write and Read Flow

8.6 Register Maps

表 8-5. Register Map

SCRATCHPAD-1 BYTE	TYPE	RESET	REGISTER NAME	REGISTER DESCRIPTION	SECTION
00h	RO	00h	TEMP_RESULT_L	Temperature result LSB register	Go
01h	RO	00h	TEMP_RESULT_H	Temperature result MSB register	Go
02h	RO	3xh	STATUS_REG	Status register	Go
03h	RO	FFh	Reserved	Reserved	
04h	R/W	70h	CONFIG_REG1	Device Configuration-1 register	Go
05h	R/W	80h	CONFIG_REG2	Device Configuration-2 register	Go
06h	R/W	00h	SHORT_ADDR	Short address register	Go
07h	RO	FFh	Reserved	Reserved	
08h	R/W	00h	TEMP_ALERT_LOW_L	Temperature alert low limit LSB	Go
09h	R/W	00h	TEMP_ALERT_LOW_H	Temperature alert low limit MSB	Go
0Ah	R/W	F0h	TEMP_ALERT_HIGH_L	Temperature alert high limit LSB	Go
0Bh	R/W	07h	TEMP_ALERT_HIGH_H	Temperature alert high limit MSB	Go
0Ch	R/W	00h	TEMP_OFFSET_L	Temperature offset calibration LSB register	Go
0Dh	R/W	00h	TEMP_OFFSET_H	Temperature offset calibration MSB register	Go
0Eh	RO	FFh	Reserved	Reserved	
0Fh	RO	FFh	Reserved	Reserved	
—	RO	F0h	IO_READ	IO read register	Go
—	RW	00h	IO_CONFIG	IO configuration register	Go

表 8-6. Access Type Codes

Access Type	Code	Description
Read Type		
R	R	Read
RC	R C	Read to Clear
R-0	R -0	Read Returns 0s
Write Type		
W	W	Write
W0CP	W 0C P	W 0 to clear Requires privileged access
Reset or Default Value		
-n		Value after reset or the default value

8.6.1 Temperature Result LSB Register (Scratchpad-1 offset = 00h) [reset = 00h]

The register is part of the 16-bit temperature result readout that stores the least significant byte of the output of the most recent conversion. Following a power up, the register has the value 00h until the first conversion is complete.

Return to [Register Map](#).

图 8-32. Temperature Result LSB Register

7	6	5	4	3	2	1	0
TEMP_RESULT[7:0]							
R-00h							

表 8-7. Temperature Result LSB Register Field Descriptions

Bit	Field	Type	Reset	Description
7:0	TEMP_RESULT[7:0]	R	00h	Stores the LSB of the most recent temperature conversion results.

8.6.2 Temperature Result MSB Register (Scratchpad-1 offset = 01h) [reset = 00h]

The register is part of the 16-bit temperature result readout that stores the most significant byte of the output of the most recent conversion. Following a power up, the register has the value 00h until the first conversion is complete.

Return to [Register Map](#).

图 8-33. Temperature Result MSB Register

7	6	5	4	3	2	1	0
TEMP_RESULT[15:8]							
R-00h							

表 8-8. Temperature Result MSB Register Field Descriptions

Bit	Field	Type	Reset	Description
7:0	TEMP_RESULT[15:8]	R	00h	Stores the MSB of the most recent temperature conversion results.

8.6.3 Status Register (Scratchpad-1 offset = 02h) [reset = 3Ch]

This register provides status of the alert flags, data ready, power mode, arbitration completion, and device lock. The lock flag is set after the device configuration EEPROM is locked by the application. The arbitration done flag is set after the device successfully sends its device address and is cleared only when the ARB_MODE bits in the configuration register are cleared. The power mode status flag value is decided based on the powering technique used for the device detected at power up.

The alert flags are set after the most recent conversion results are available and cleared when the status register is read by the host application. If the alert flag is set, it cannot be cleared by the device even if the result of the last conversion is between the alert limits.

The data ready flag is set after a conversion is completed. It is automatically cleared when the host controller reads the status register.

Return to [Register Map](#).

图 8-34. Status Register

7	6	5	4	3	2	1	0
ALERT_HIGH	ALERT_LOW	Reserved		DATA_READY	POWER_MODE	ARB_DONE	LOCK_STATUS
RC-0b	RC-0b	R-11b		R-0b	R-xb	R-0b	R-0b

表 8-9. Status Register Field Description

Bit	Field	Type	Reset	Description
7	ALERT_HIGH	RC	0b	Alert high status flag 0b = Last temperature conversion result is less than alert high limit 1b = Last temperature conversion result is more than or equal to alert high limit Alert high status flag is available on the IO2 pin when the pin is configured for alert function
6	ALERT_LOW	RC	0b	Alert low status flag 0b = Last temperature conversion result is more than alert low limit 1b = Last temperature conversion result is less than or equal to alert low limit Alert low status flag is available on the IO2 pin when the pin is configured for alert function
5:4	Reserved	R	11b	Reserved
3	DATA_READY	R	0b	Data ready status flag 0b = No update in temperature result register 1b = Temperature result register updated after conversion The data ready flag is automatically cleared when the host controller reads the status register
2	POWER_MODE	R	xb	Device power mode flag. 0b = V _{DD} powered mode 1b = Bus powered mode
1	ARB_DONE	R	0b	Arbitration complete flag 0b = Arbitration is not complete or not enabled 1b = Arbitration is complete
0	LOCK_STATUS	R	0b	Lock status flag. 0b = Device configuration registers can be updated 1b = Device configuration registers cannot be updated

8.6.4 Device Configuration-1 Register (Scratchpad-1 offset = 04h) [reset = 70h]

The register is used to configure the device functions like the number of valid bits in temperature readout, alert mode, averaging, and conversion type (one-shot, auto and stacked conversion in bus powered mode and one-shot or continuous conversion in V_{DD} powered mode). The host can store the updated setting to the configuration EEPROM using the COPY SCRATCHPAD-1 function command. At power-on reset, the register setting is automatically restored from the configuration EEPROM.

Return to [Register Map](#).

图 8-35. Device Configuration-1 Register

7	6	5	4	3	2	1	0
TEMP_FMT	Reserved	CONV_TIME_SEL	ALERT_MODE	AVG_SEL	CONV_MODE_SEL[2:0]		
RW-0b	RW-1b	RW-1b	RW-1b	RW-0b	RW-000b		

表 8-10. Device Configuration-1 Register Field Descriptions

Bit	Field	Type	Reset	Description
7	TEMP_FMT	RW	0b	Selects the temperature format. 0b = 12-bit legacy format 1b = 16-bit high precision format
6	Reserved	RW	1b	Reserved
5	CONV_TIME_SEL	RW	1b	Selects the ADC conversion time 0b = 3 ms / 1b = 5.5 ms
4	ALERT_MODE	RW	1b	Alert pin function only available in V_{DD} powered mode 0b = Alert pin works in Alert Mode 1b = Alert pin works in Comparator Mode
3	AVG_SEL	RW	0b	Conversion averaging selection 0b = No averaging 1b = Averaging of 8 conversions
2:0	CONV_MODE_SEL[2:0]	RW	000b	Conversion mode selection bits. When device is in bus powered mode: 000b = Default one shot conversion mode using CONVERT TEMP function 001b = Stacked conversion mode is enabled. When enabled, the short address is used to stagger the actual conversion start with respect to the conversion request. 010b = Auto temperature conversion mode is enabled 011b - 111b = Reserved. Device behavior is unspecified. When device is in V_{DD} powered mode: 000b = Default one shot conversion mode using CONVERT TEMP function 001b = One conversion every 8 seconds 010b = One conversion every 4 seconds 011b = One conversion every 2 seconds 100b = One conversion every 1 second 101b = One conversion every 0.5 second 110b = One conversion every 0.25 second 111b = One conversion every 0.125 second

8.6.5 Device Configuration-2 Register (Scratchpad-1 offset = 05h) [reset = 80h]

This register is used to configure the overdrive enable, flexible address mode, arbitration mode during address discovery, and the hysteresis for alert status or pin (available only in V_{DD} powered mode for alert pin). The register can be used to lock the writable registers for the device. All register bits except FLEX_ADDR_MODE can be stored in the configuration EEPROM using the COPY SCRATCHPAD-1 function command and restored at power-on reset.

备注

1. When setting the overdrive enable or lock enable bits, the application must send all the scratchpad-1 data bytes and read the CRC from the device before the change of overdrive bit takes effect.
2. When FLEX_ADDR_MODE is selected to decode resistor or IO, the bus must be put in idle state after the device configuration-2 register byte is transmitted for t_{RESET} .

Return to [Register Map](#).

图 8-36. Device Configuration-2 Register

7	6	5	4	3	2	1	0
OD_EN	FLEX_ADDR_MODE[1:0]	ARB_MODE[1:0]	HYSTERSIS[1:0]	LOCK_EN			
RO-1b	RW-00b	RW-00b	RW-00b	RW-00b			

表 8-11. Device Configuration-2 Register Field Description

Bit	Field	Type	Reset	Description
7	OD_EN	RO	1b	Overdrive mode enable 0b = Overdrive speed is disabled 1b = Overdrive speed is enabled The bit when set cannot be cleared by host write and will automatically be cleared only by a standard speed reset signal. See Note-1 above.
6:5	FLEX_ADDR_MODE[1:0]	RW	00b	Flexible address mode selection. 00b = Short address register is updated by host 01b = Short address register is updated by IO pin decode 10b = Short address register is updated by Resistor decode 11b = Short address register is updated by combined IO and resistor address decode Flexible address mode selection takes effect only when there is a change detected in the bit setting.
4:3	ARB_MODE[1:0]	RW	00b	Arbitration mode 00b = Arbitration by device is disabled 01b = Reserved 10b = Arbitration by device is enabled in software compatible mode 11b = Fast Arbitration mode is enabled The arbitration feature is applicable only when address command is SEARCHADDR. Other commands and functions are not affected by the ARB_MODE bit.
2:1	HYSTERSIS[1:0]	RW	00b	Alert hysteresis selection 00b = 5 °C hysteresis 01b = 10 °C hysteresis 10b = 15 °C hysteresis 11b = 20 °C hysteresis

表 8-11. Device Configuration-2 Register Field Description (continued)

Bit	Field	Type	Reset	Description
0	LOCK_EN	RW	0b	Register lock protection enable/disable bit 0b = The register protection is disabled 1b = The register protection is enabled. When set the bit cannot be cleared by writing to the register to unlock the register protection. The feature when enabled, prevents application write to the temperature offset, temperature alert low, temperature alert high, short address and device configuration registers. See Note-1 above.

8.6.6 Short Address Register (Scratchpad-1 offset = 06h) [reset = 00h]

The register is used to program the short address for the device. The host can store the updated setting to the configuration EEPROM using the COPY SCRATCHPAD-1 function command. At power-on reset, the register setting is automatically restored from the configuration EEPROM. As described in [Flexible Device Address](#), the specific short address decoded value is overlaid on the non-volatile memory content restored to the short address register.

The short address register can only be updated by the application when the FLEX_ADDR_MODE bits have the value '00b'. Any write to register when the FLEX_ADDR_MODE bits are not '00b' shall be ignored by the device.

Return to [Register Map](#).

图 8-37. Short Address Register

7	6	5	4	3	2	1	0
SHORT_ADDRESS[7:0]							
RW-00h							

表 8-12. Short Address Register Field Descriptions

Bit	Field	Type	Reset	Description
7:0	SHORT_ADDRESS[7:0]	RW	00h	Stores the short address for the device which may be used to access the device without sending the 64-bit Unique Device Address. When FLEX_ADDR_MODE[1:0] = 0h, the 8-bit value of the register is used as is. When FLEX_ADDR_MODE[1:0] = 1h or 2h, the upper 4-bit of the register is updated from the value committed to the non-volatile memory, while the lower 4-bit are decoded based on IO0-IO3 connection on the board or address decoding based on the resistor connected to ADDR pin, respectively. When FLEX_ADDR_MODE[1:0] = 3h, the upper 2-bit of the register is updated from the value committed to the non volatile memory, the next 2-bit are decoded from IO1 and IO0, and the last 4-bit is decoded from the resistor connected to ADDR pin. The short address is also used during stacked conversion mode to stagger the active conversion.

8.6.7 Temperature Alert Low LSB Register (Scratchpad-1 offset = 08h) [reset = 00h]

This register provides the LSB for the low temperature alert threshold to compare with the latest temperature conversion result. The register on the first power up has the alert threshold set in legacy format. If there is a change of format, then the application must update the register in the new format. If the latest temperature conversion result is less than the threshold set, then the device shall update the alert low status flag in the status register, respond with the status bit flagged for an alert during the ALERTSEARCH command, and set the alert pin low if the device is in V_{DD} powered mode.

The host can store the updated setting to the configuration EEPROM using the COPY SCRATCHPAD-1 function command. At power-on reset, the register setting is automatically restored from the configuration EEPROM.

Return to [Register Map](#).

图 8-38. Temperature Alert Low Register

7	6	5	4	3	2	1	0
ALERT_LOW[7:0]							
RW-00h							

表 8-13. Temperature Alert Low Register Field Descriptions

Bit	Field	Type	Reset	Description
7:0	ALERT_LOW[7:0]	RW	00h	Stores the LSB of the alert low limit for comparison with the last temperature conversion result

8.6.8 Temperature Alert Low MSB Register (Scratchpad-1 offset = 09h) [reset = 00h]

This register provides the MSB for the low temperature alert threshold to compare with the latest temperature conversion result. The register on the first power up has the alert threshold set in legacy format. If there is a change of format, then the application must update the register in the new format. If the latest temperature conversion result is less than the threshold set, then the device shall update the alert low status flag in the status register, respond with the status bit flagged for an alert during the ALERTSEARCH command, and set the alert pin low if the device is in V_{DD} powered mode.

The host can store the updated setting to the configuration EEPROM using the COPY SCRATCHPAD-1 function command. At power-on reset, the register setting is automatically restored from the configuration EEPROM.

Return to [Register Map](#).

表 8-14.

7	6	5	4	3	2	1	0
ALERT_LOW[15:8]							
RW-00h							

表 8-15.

Bit	Field	Type	Reset	Description
7:0	ALERT_LOW[15:8]	RW	00h	Stores the MSB of the alert low limit for comparison with the last temperature conversion result

8.6.9 Temperature Alert High LSB Register (Scratchpad-1 offset = 0Ah) [reset = F0h]

This register provides the LSB for the high temperature alert threshold to compare with the latest temperature conversion result. The register on the first power up has the alert threshold set in legacy format. If there is a change of format, then the application must update the register in the new format. If the latest temperature conversion result is more than the threshold set, then the device shall update the alert high status flag in the status register, respond with the status bit flagged for an alert during the ALERTSEARCH command, and set the alert pin low if the device is in V_{DD} powered mode.

The host can store the updated setting to the configuration EEPROM using the COPY SCRATCHPAD-1 function command. At power-on reset, the register setting is automatically restored from the configuration EEPROM.

Return to [Register Map](#).

图 8-39. Temperature Alert High Register

7	6	5	4	3	2	1	0
ALERT_HIGH[7:0]							
RW-F0h							

表 8-16. Temperature Alert High Register Field Descriptions

Bit	Field	Type	Reset	Description
7:0	ALERT_HIGH[7:0]	RW	F0h	Stores the LSB of the alert high limit for comparison with the last temperature conversion result

8.6.10 Temperature Alert High MSB Register (Scratchpad-1 offset = 0Bh) [reset = 07h]

This register provides the MSB for the high temperature alert threshold to compare with the latest temperature conversion result. The register on the first power up has the alert threshold set in legacy format. If there is a change of format, then the application must update the register in the new format. If the latest temperature conversion result is more than the threshold set, then the device shall update the alert high status flag in the status register, respond with the status bit flagged for an alert during the ALERTSEARCH command, and set the alert pin low if the device is in V_{DD} powered mode.

The host can store the updated setting to the configuration EEPROM using the COPY SCRATCHPAD-1 function command. At power-on reset, the register setting is automatically restored from the configuration EEPROM.

Return to [Register Map](#).

图 8-40. Temperature Alert High MSB Register

7	6	5	4	3	2	1	0
ALERT_HIGH[15:8]							
RW-07h							

表 8-17. Temperature Alert High MSB Register Field Description

Bit	Field	Type	Reset	Description
7:0	ALERT_HIGH[15:8]	RW	07h	Stores the MSB of the alert high limit for comparison with the last temperature conversion result

8.6.11 Temperature Offset LSB Register (Scratchpad-1 offset = 0Ch) [reset = 00h]

The register is used to store the LSB of the offset calibration for the temperature sensor. The register on the first power up has the temperature offset set in legacy format. If there is a change of format, then the application must update the register in the new format. After every temperature conversion, the offset calibration is automatically applied to the temperature result, before being stored in the TEMP_RESULT_L and TEMP_RESULT_H registers.

The host can store the updated setting to the configuration EEPROM using the COPY SCRATCHPAD-1 function command. At power-on reset, the register setting is automatically restored from the configuration EEPROM.

Return to [Register Map](#).

图 8-41. Temperature Offset LSB Register

7	6	5	4	3	2	1	0
TEMP_OFFSET_L[7:0]							
RW-00h							

表 8-18. Temperature Offset LSB Register Field Descriptions

Bit	Field	Type	Reset	Description
7:0	TEMP_OFFSET_L[7:0]	RW	00h	Stores the offset correction LSB for the temperature result

8.6.12 Temperature Offset MSB Register (Scratchpad-1 offset = 0Dh) [reset = 00h]

The register is used to store the MSB of the offset calibration for the temperature sensor. The register on the first power up has the temperature offset set in legacy format. If there is a change of format, then the application must update the register in the new format. After every temperature conversion, the offset calibration is automatically applied to the temperature result, before being stored in the TEMP_RESULT_L and TEMP_RESULT_H registers.

The host can store the updated setting to the configuration EEPROM using the COPY SCRATCHPAD-1 function command. At power-on reset, the register setting is automatically restored from the configuration EEPROM.

Return to [Register Map](#).

图 8-42. Temperature Offset MSB Register

7	6	5	4	3	2	1	0
TEMP_OFFSET_H[15:8]							
RW-00h							

表 8-19. Temperature Offset MSB Register Field Descriptions

Bit	Field	Type	Reset	Description
7:0	TEMP_OFFSET_H[15:8]	RW	00h	Stores the offset correction MSB for the temperature result

8.6.13 IO Read Register [reset = F0h]

The register is used to read the state of the IO0 to IO3 pin. The register values are updated when the GPIO READ function is issued by the host or when the GPIO configuration is written using the GPIO WRITE function. When IO2 is configured to function as an alert pin, it provides a status of the alert pin.

Return to [Register Map](#).

图 8-43. IO Read Register

7	6	5	4	3	2	1	0
nIO3_STATE	nIO2_STATE	nIO1_STATE	nIO0_STATE	IO3_STATE	IO2_STATE	IO1_STATE	IO0_STATE
R-1b	R-1b	R-1b	R-1b	R-0b	R-0b	R-0b	R-0b

表 8-20. IO Read Register Field Descriptions

Bit	Field	Type	Reset	Description
7	nIO3_STATE	R	1b	Read inverted value of the IO3 pin when configured as a digital input or output
6	nIO2_STATE	R	1b	Read inverted value of the IO2 pin when configured as a digital input or output
5	nIO1_STATE	R	1b	Read inverted value of the IO1 pin when configured as a digital input or output
4	nIO0_STATE	R	1b	Read inverted value of the IO0 pin when configured as a digital input or output
3	IO3_STATE	R	0b	Read value of the IO3 pin when configured as a digital input or output
2	IO2_STATE	R	0b	Read value of the IO2 pin when configured as a digital input or output
1	IO1_STATE	R	0b	Read value of the IO1 pin when configured as a digital input or output
0	IO0_STATE	R	0b	Read value of the IO0 pin when configured as a digital input or output

8.6.14 IO Configuration Register [reset = 00h]

The register is used to select the IO function for the pins marked IO0-IO3 on the device. When selected to function as a digital open-drain output, the pin shall be able to drive a 0 or 1 externally for controlling the gate or base of a transistor on IO0 to IO3 pin. In bus powered mode, IOs tied to SDQ and used for short address must not be configured as output as this may cause the SDQ line to be driven low.

Return to [Register Map](#).

图 8-44. IO Configuration Register

7	6	5	4	3	2	1	0
IO3_SEL[1:0]	IO2_SEL[1:0]	IO1_SEL[1:0]	IO0_SEL[1:0]				
RW-00b	RW-00b	RW-00b	RW-00b				

表 8-21. IO Configuration Register Field Descriptions

Bit	Field	Type	Reset	Description
7:6	IO3_SEL[1:0]	RW	00b	Selects the function of the IO 00b = IO3 is configured as input buffer and can be read 01b = Reserved 10b = IO3 is configured as an output in open drain mode and the IO is driven as '0' 11b = IO3 is configured as an output in open drain mode and the IO is driven as '1'

表 8-21. IO Configuration Register Field Descriptions (continued)

Bit	Field	Type	Reset	Description
5:4	IO2_SEL[1:0]	RW	00b	Selects the function of the IO 00b = IO2 is configured as input buffer and can be read 01b = IO2 is configured as an open drain active low alert 10b = IO2 is configured as an output in open drain mode and the IO is driven as '0' 11b = IO2 is configured as an output in open drain mode and the IO is driven as '1'
3:2	IO1_SEL[1:0]	RW	00b	Selects the function of the IO 00b = IO1 is configured as input buffer and can be read 01b = Reserved 10b = IO1 is configured as an output in open drain mode and the IO is driven as '0' 11b = IO1 is configured as an output in open drain mode and the IO is driven as '1'
1:0	IO0_SEL[1:0]	RW	00b	Selects the function of the IO 00b = IO0 is configured as input buffer and can be read 01b = Reserved 10b = IO0 is configured as an output in open drain mode and the IO is driven as '0' 11b = IO0 is configured as an output in open drain mode and the IO is driven as '1'

9 Application and Implementation

备注

以下应用部分中的信息不属于 TI 器件规格的范围，TI 不担保其准确性和完整性。TI 的客户应负责确定器件是否适用于其应用。客户应验证并测试其设计，以确保系统功能。

9.1 Application Information

The TMP1827 can operate as a single-wire half duplex bus, either in supply or bus powered mode. The TMP1827 features a thermal sensor with an integrated 2-kbit user EEPROM and SHA-256-HMAC authentication for applications requiring identification with lesser number of components due to space constraints. The device also features an integrated CRC that may be used for ensuring data integrity during communication.

The bus powered mode is designed for applications working without a dedicated power supply pin and can reduce cabling costs. As the device current consumption during thermal conversion and EEPROM operations is low, the device may not require a low impedance current path, thereby reducing the need for additional FET or load switch and current limiting resistor to bypass the bus pullup resistor. The pullup resistor used during bus powered mode must be correctly sized to ensure that sufficient current can be supplied during a thermal conversion and EEPROM operation, and input pin voltage does not fall below the $V_{IH(MIN)}$.

Additionally, if the host needs to reset the device when operating in bus powered mode, the host must pull the communication line low for at least 100 ms. This allows the internal capacitor of the device to discharge and prepare the device for power on reset.

9.2 Typical Applications

9.2.1 Bus Powered Application

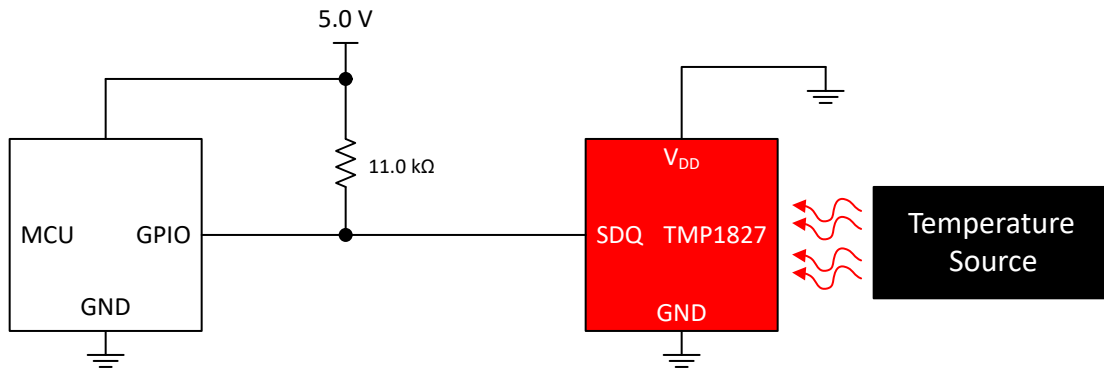


图 9-1. Bus Powered Application

9.2.1.1 Design Requirements

For this design example, use the parameters listed below:

表 9-1. Design Parameters

PARAMETER	VALUE
Power mode	Bus Powered
Supply (V_{DD})	5.0 V
Pullup resistor range (R_{PUR})	1.2 kΩ to 11.0 kΩ

9.2.1.2 Detailed Design Procedure

To reduce the wire count, the bus powered mode for TMP1827 is the primary mode of operation. The V_{DD} pin of the device must be connected to GND and the SDQ pin of the device must be connected to the host GPIO with a pullup resistor.

To calculate the pullup resistor range, substitute the value for V_{PUR} , $V_{OL(MAX)}$ and $I_{PU(MIN)}$ in 方程式 1.

$$\frac{(5.0 - 0.4)}{4 \times 10^{-3}} < R_{PUR} < \frac{(5.0 - 1.6)}{300 \times 10^{-6}} \quad (2)$$

$$1.15 \text{ k}\Omega < R_{PUR} < 11.333 \text{ k}\Omega \quad (3)$$

The actual value of the pullup resistor can then be adjusted based on the speed of communication and bus or cable parasitic capacitance.

When the V_{DD} is activated, the TMP1827 draws current through the pullup resistor to charge its internal capacitors. When the internal capacitor is charged to the pullup voltage, the host can start communication. The bus idle state is high, which is maintained by the pullup resistor, when the host puts its GPIO in high impedance state.

The TMP1827 uses the stored charge to operate when the SDQ pin is low and measures the low period to decode bus reset, logic high and logic low sent by the host. Similarly, when the host reads data from the TMP1827, it changes the state of the bus from high to low and releases the bus. Depending on whether the device has to send a logic low or logic high, the device shall either hold the bus low or release the bus immediately.

9.2.2 Supply Powered Application

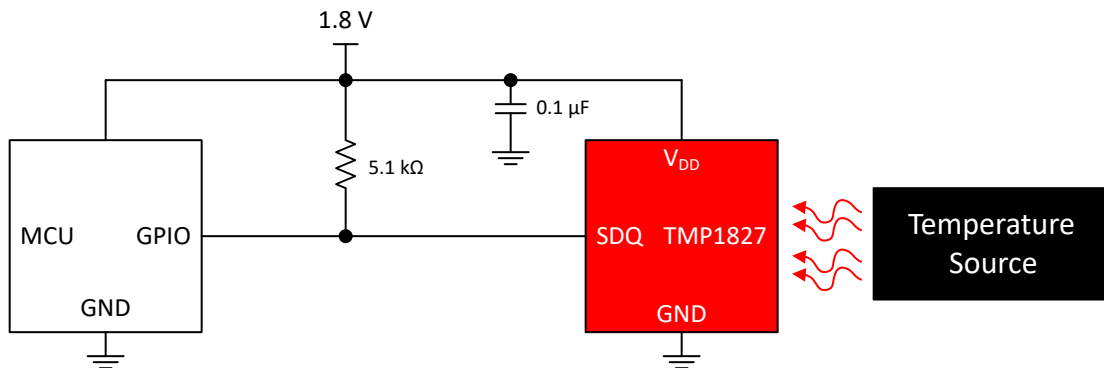


图 9-2. Supply Powered Application

9.2.2.1 Design Requirements

For this design example, use the parameters listed below:

表 9-2. Design Parameters

PARAMETER	VALUE
Power mode	V_{DD} Powered
Supply (V_{DD})	1.8 V
Pullup resistor (R_{PUR})	5.1 kΩ

9.2.2.2 Detailed Design Procedure

The supply powered mode uses the V_{DD} pin connected to the same supply rail as the host and pullup resistor. TI recommends to put a 0.1-μF bypass capacitor close to the V_{DD} pin of the TMP1827.

The pullup resistor value of 5.1 k Ω , is large enough to provide proper communication with standard speed and avoid V_{OL} violation when the device is sending data to the host. The user may change the value based on the total bus load and application operating requirements.

The communication protocol for supply powered mode is same as that for bus powered mode, which allows the entire software stack to be reused. This mode of operation is useful for onboard thermal sensing applications as it provides for continuous conversion and alert function.

9.2.3 UART Interface for Communication

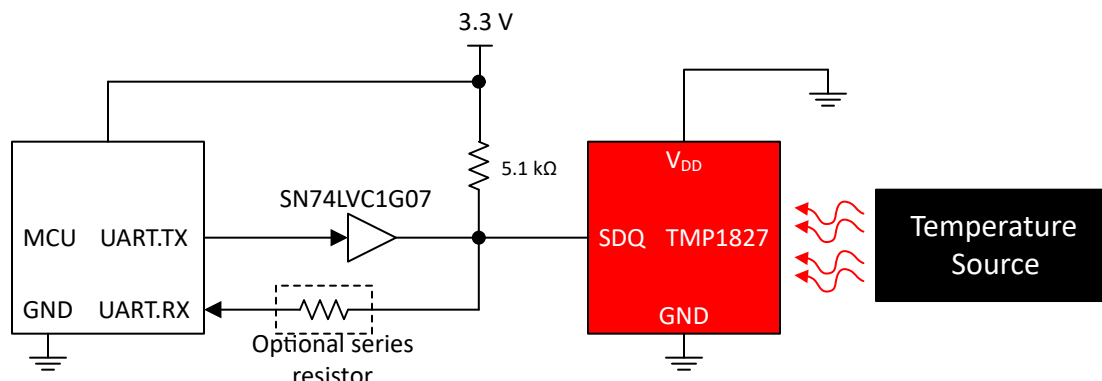


图 9-3. Using UART to interface TMP1827

9.2.3.1 Design Requirements

For this design example, use the parameters listed below:

表 9-3. Design Parameters

PARAMETER	VALUE
Power Mode	Bus powered
Supply (V_{DD})	3.3 V
Pullup resistor range (R_{PUR})	750 Ω to 5.1 k Ω

9.2.3.2 Detailed Design Procedure

If using GPIO for communication is not possible due to any reason, it is also possible to use UART peripheral that is available on most host controllers to interface with the TMP1827. UART is a push-pull full duplex bus and to interface with TMP1827, it requires a buffer with open-drain driver like the SN74LVC1G07.

The input of the buffer is connected to the UART transmit pin and the output of the buffer is connected to the SDQ pin on the TMP1827. The output of the buffer is also connected to the UART receive pin on the host. As the output is open-drain, it requires a pullup resistor which can be calculated in 方程式 1. Substituting the value for $V_{PUR} = 3.3$ V, $V_{OL(MAX)} = 0.4$ V and $I_{PU(MIN)} = 300$ μ A, the R_{PUR} value selected must be greater than 725 Ω and less than 5.67 k Ω .

In software, the application must adjust its baud rate so that it can send bus reset to the device by sending 00h. The start bit of the UART frame which is always 0, provides the required falling edge for data sent to the TMP1827. When sending a logic high to the device, the UART shall send FFh to the TMP1827 and, when sending a logic low to the device, the UART shall send C0h. As UART is a full duplex bus, the host must flush its receive buffers during a transmit operation.

When receiving data from the TMP1827, the host shall send FFh and the device when transmitting a logic high will detect and release the bus, while when transmitting a logic low will detect and hold the bus. As a result, the host shall receive a FFh for a logic high and F0h for a logic low depending on the baud rate configured.

9.3 Power Supply Recommendations

The TMP1827 operates with a power supply in the range of 1.7 V to 5.5 V in both V_{DD} powered and bus powered modes. When operating in V_{DD} powered mode, a power-supply bypass capacitor is required for precision and stability. Place this power-supply bypass capacitor as close to the supply and ground pins of the device as possible. A typical value for this supply bypass capacitor is 0.1 μ F. Applications with noisy or high-impedance power supplies can require a bigger bypass capacitor to reject power-supply noise.

In bus powered mode, the V_{DD} pin must be connected to ground. The internal capacitor in the device is sufficient to provide power during bus communication. The internal capacitor is recharged through the external pullup resistor during the recovery period. In cases, where there is a long bus length or at higher temperatures, it may be necessary for the host to provide additional time for bus recovery or to use the overdrive speed in which the part uses the internal capacitor charge less.

When using IO pins to control external circuits, take care that currents to these pins do not heat the part and offset temperature measurements.

9.4 Layout

9.4.1 Layout Guidelines

Place the power-supply bypass capacitor as close as possible to the supply and ground pins when in supply powered mode. The recommended value of the capacitor is 0.1 μ F. The open-drain SDQ pin requires an external pullup resistor which must not be higher than R_{PUR} .

When in bus powered mode, only the external pullup resistor is required for the open-drain SDQ pin.

To achieve a high precision temperature reading for a rigid PCB, do not solder the thermal pad. For a flexible PCB, the user may solder the thermal pad to the increase board level reliability. If the thermal pad is soldered, then it should be connected to the ground.

9.4.2 Layout Example

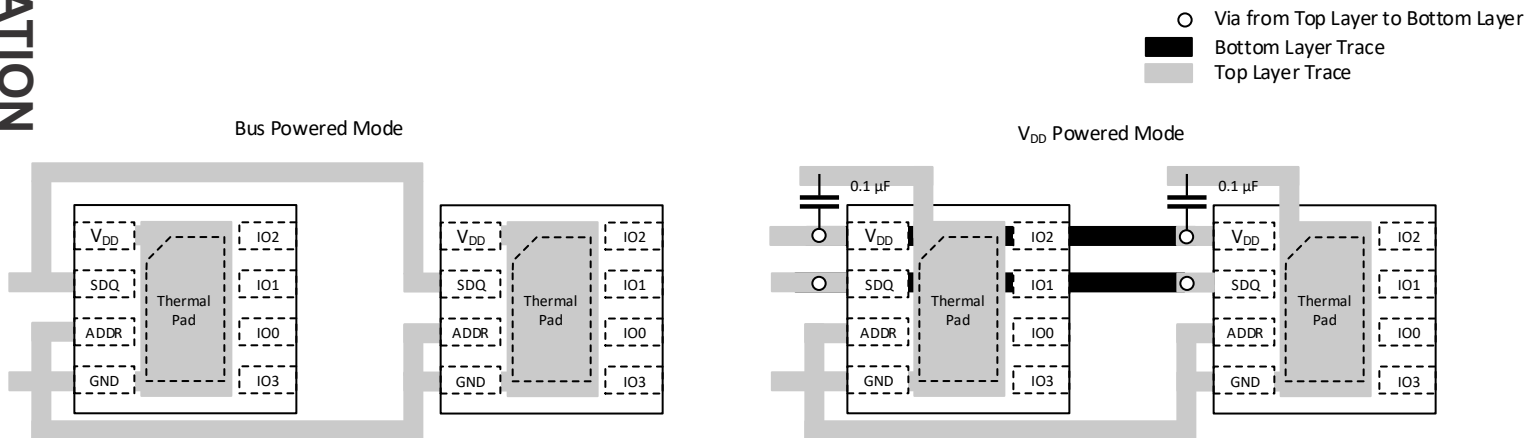


图 9-4. Layout Example

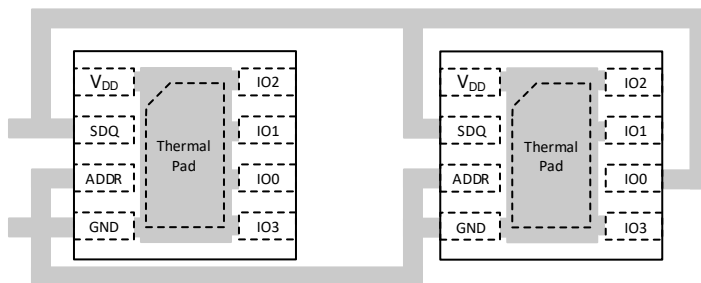


图 9-5. IO Hardware Address in Bus Powered Mode

10 Device and Documentation Support

10.1 Documentation Support

10.1.1 Related Documentation

For related documentation see the following:

- [TMP1827 EVM User's Guide](#) (SBOU294)
- [TMP1827 Security Programming Guide](#) (SBOU270)

10.2 接收文档更新通知

要接收文档更新通知，请导航至 ti.com 上的器件产品文件夹。点击 [订阅更新](#) 进行注册，即可每周接收产品信息更改摘要。有关更改的详细信息，请查看任何已修订文档中包含的修订历史记录。

10.3 支持资源

[TI E2E™ 支持论坛](#) 是工程师的重要参考资料，可直接从专家获得快速、经过验证的解答和设计帮助。搜索现有解答或提出自己的问题可获得所需的快速设计帮助。

链接的内容由各个贡献者“按原样”提供。这些内容并不构成 TI 技术规范，并且不一定反映 TI 的观点；请参阅 TI 的《使用条款》。

10.4 Trademarks

TI E2E™ is a trademark of Texas Instruments.

所有商标均为其各自所有者的财产。

10.5 Electrostatic Discharge Caution



This integrated circuit can be damaged by ESD. Texas Instruments recommends that all integrated circuits be handled with appropriate precautions. Failure to observe proper handling and installation procedures can cause damage.

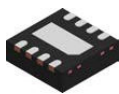
ESD damage can range from subtle performance degradation to complete device failure. Precision integrated circuits may be more susceptible to damage because very small parametric changes could cause the device not to meet its published specifications.

10.6 术语表

[TI 术语表](#) 本术语表列出并解释了术语、首字母缩略词和定义。

11 Mechanical, Packaging, and Orderable Information

The following pages include mechanical, packaging, and orderable information. This information is the most current data available for the designated devices. This data is subject to change without notice and revision of this document. For browser-based versions of this data sheet, refer to the left-hand navigation.

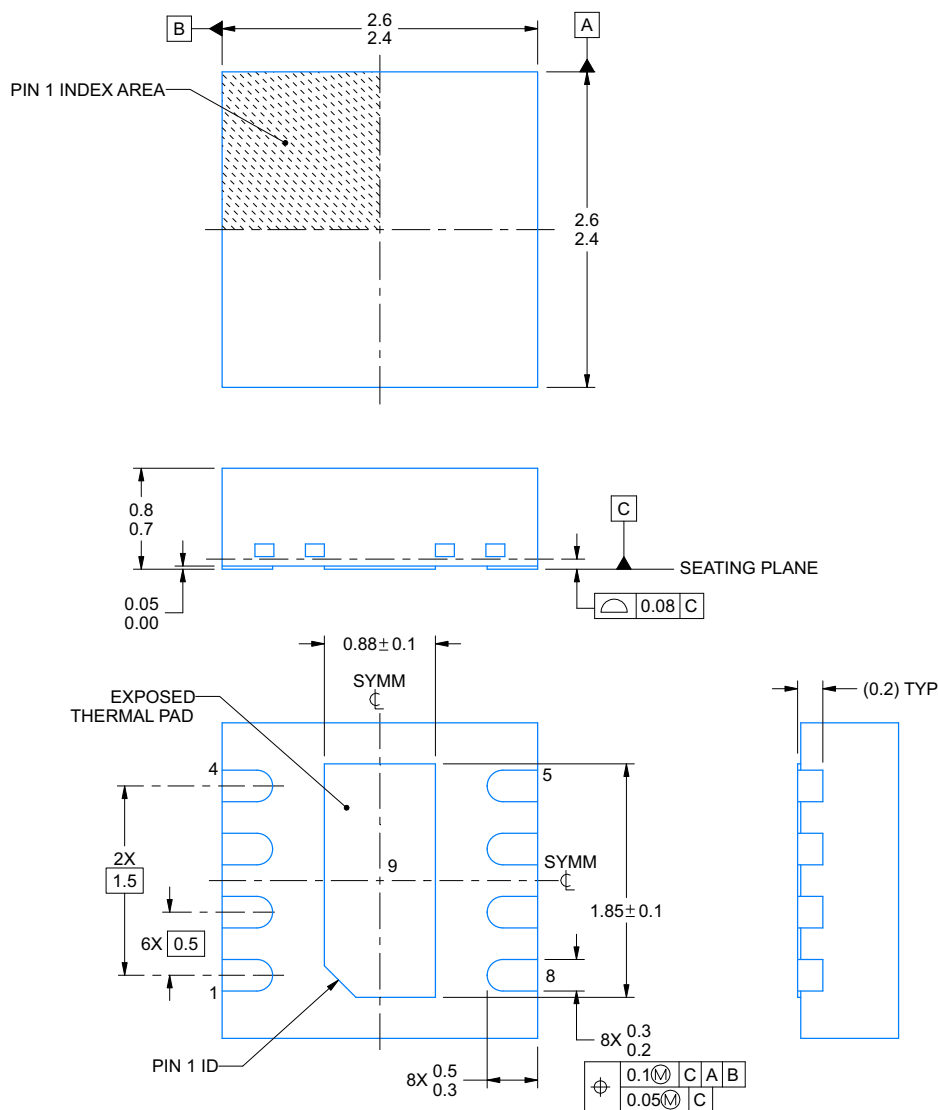


PACKAGE OUTLINE

WSN - 0.8 mm max height

PLASTIC SMALL OUTLINE - NO LEAD

NGR0008C



4227008/D 03/2022

NOTES:

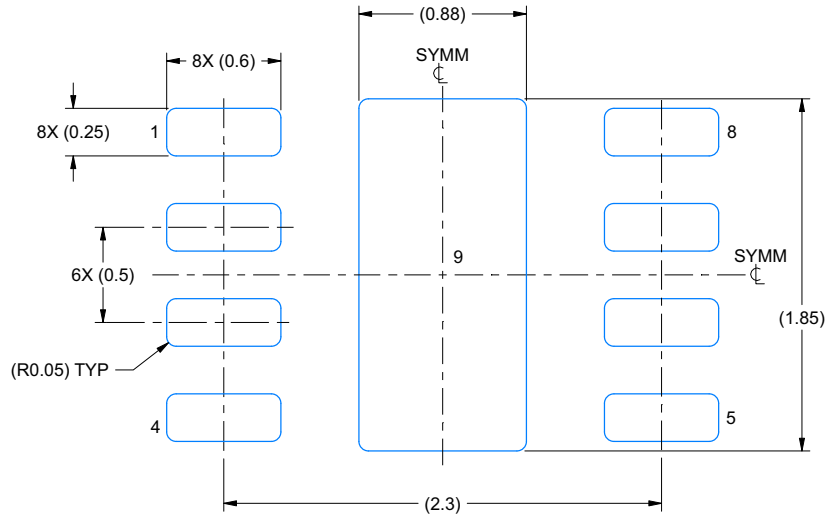
1. All linear dimensions are in millimeters. Any dimensions in parenthesis are for reference only. Dimensioning and tolerancing per ASME Y14.5M.
2. This drawing is subject to change without notice.
3. The package thermal pad must be soldered to the printed circuit board for thermal and mechanical performance.

EXAMPLE BOARD LAYOUT

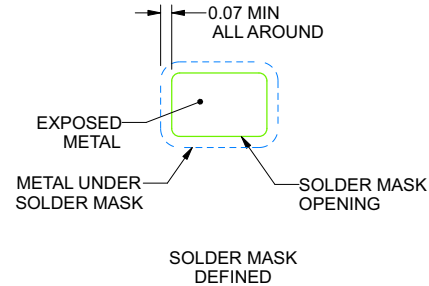
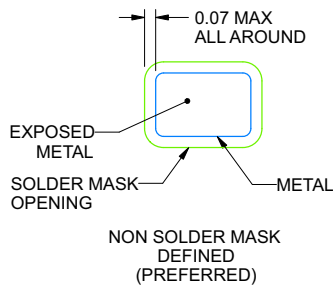
NGR0008C

WSN - 0.8 mm max height

PLASTIC SMALL OUTLINE - NO LEAD



LAND PATTERN EXAMPLE
EXPOSED METAL SHOWN
SCALE:30X



SOLDER MASK DETAILS

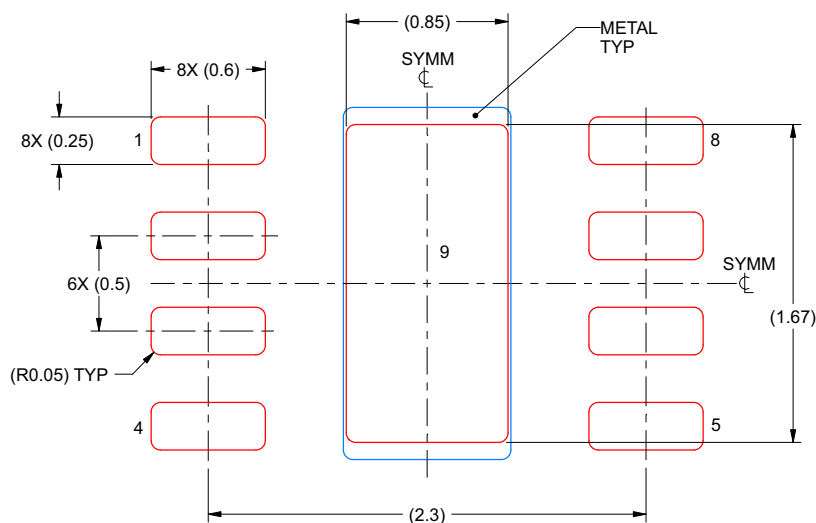
4227008/D 03/2022

NOTES: (continued)

4. This package is designed to be soldered to a thermal pad on the board. For more information, see Texas Instruments literature number SLUA271 (www.ti.com/lit/sluea271).
5. Vias are optional depending on application, refer to device data sheet. If any vias are implemented, refer to their locations shown on this view. It is recommended that vias under paste be filled, plugged or tented.

EXAMPLE STENCIL DESIGN**NGR0008C****WSN - 0.8 mm max height**

PLASTIC SMALL OUTLINE - NO LEAD



SOLDER PASTE EXAMPLE
 BASED ON 0.125 mm THICK STENCIL

EXPOSED PAD 9:
 87% PRINTED SOLDER COVERAGE BY AREA UNDER PACKAGE
 SCALE:30X

4227008/D 03/2022

NOTES: (continued)

6. Laser cutting apertures with trapezoidal walls and rounded corners may offer better paste release. IPC-7525 may have alternate design recommendations.

11.1 Package Option Addendum

Packaging Information

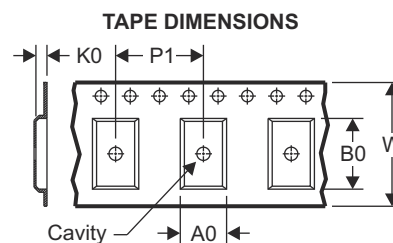
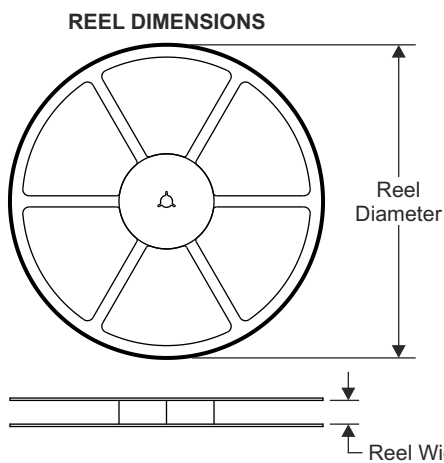
Orderable Device	Status ⁽¹⁾	Package Type	Package Drawing	Pins	Package Qty	Eco Plan ⁽²⁾	Lead/Ball Finish ⁽⁶⁾	MSL Peak Temp ⁽³⁾	Op Temp (°C)	Device Marking ^{(4) (5)}
PTMP1827NG RT	ACTIVE	WSON	NGR	8	250	TBD	Call TI	Call TI	-55 to 150	

- (1) The marketing status values are defined as follows:
ACTIVE: Product device recommended for new designs.
LIFEBUY: TI has announced that the device will be discontinued, and a lifetime-buy period is in effect.
NRND: Not recommended for new designs. Device is in production to support existing customers, but TI does not recommend using this part in a new design.
PRE_PROD Unannounced device, not in production, not available for mass market, nor on the web, samples not available.
PREVIEW: Device has been announced but is not in production. Samples may or may not be available.
OBSOLETE: TI has discontinued the production of the device.
- (2) Eco Plan - The planned eco-friendly classification: Pb-Free (RoHS), Pb-Free (RoHS Exempt), or Green (RoHS & no Sb/Br) - please check www.ti.com/productcontent for the latest availability information and additional product content details.
TBD: The Pb-Free/Green conversion plan has not been defined.
Pb-Free (RoHS): TI's terms "Lead-Free" or "Pb-Free" mean semiconductor products that are compatible with the current RoHS requirements for all 6 substances, including the requirement that lead not exceed 0.1% by weight in homogeneous materials. Where designed to be soldered at high temperatures, TI Pb-Free products are suitable for use in specified lead-free processes.
Pb-Free (RoHS Exempt): This component has a RoHS exemption for either 1) lead-based flip-chip solder bumps used between the die and package, or 2) lead-based die adhesive used between the die and leadframe. The component is otherwise considered Pb-Free (RoHS compatible) as defined above.
Green (RoHS & no Sb/Br): TI defines "Green" to mean Pb-Free (RoHS compatible), and free of Bromine (Br) and Antimony (Sb) based flame retardants (Br or Sb do not exceed 0.1% by weight in homogeneous material).
- (3) MSL, Peak Temp. -- The Moisture Sensitivity Level rating according to the JEDEC industry standard classifications, and peak solder temperature.
- (4) There may be additional marking, which relates to the logo, the lot trace code information, or the environmental category on the device.
- (5) Multiple Device markings will be inside parentheses. Only one Device Marking contained in parentheses and separated by a "~" will appear on a device. If a line is indented then it is a continuation of the previous line and the two combined represent the entire Device Marking for that device.
- (6) Lead/Ball Finish - Orderable Devices may have multiple material finish options. Finish options are separated by a vertical ruled line. Lead/Ball Finish values may wrap to two lines if the finish value exceeds the maximum column width.

Important Information and Disclaimer: The information provided on this page represents TI's knowledge and belief as of the date that it is provided. TI bases its knowledge and belief on information provided by third parties, and makes no representation or warranty as to the accuracy of such information. Efforts are underway to better integrate information from third parties. TI has taken and continues to take reasonable steps to provide representative and accurate information but may not have conducted destructive testing or chemical analysis on incoming materials and chemicals. TI and TI suppliers consider certain information to be proprietary, and thus CAS numbers and other limited information may not be available for release.

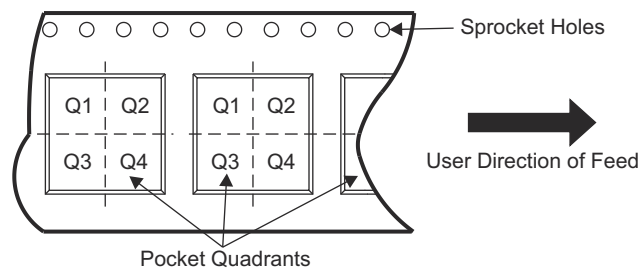
In no event shall TI's liability arising out of such information exceed the total purchase price of the TI part(s) at issue in this document sold by TI to Customer on an annual basis.

11.2 Tape and Reel Information



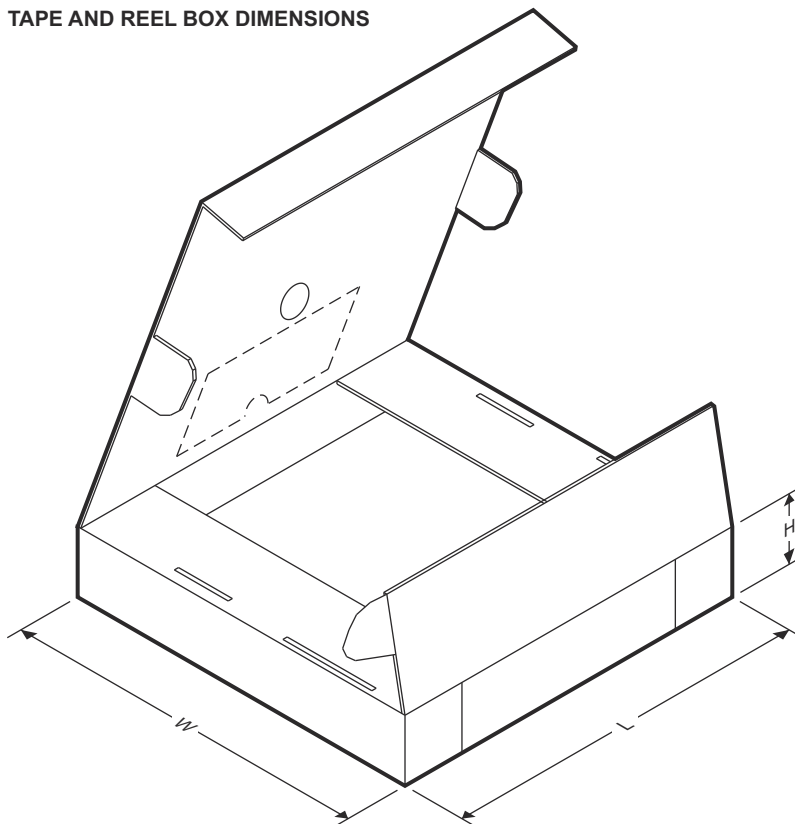
A0	Dimension designed to accommodate the component width
B0	Dimension designed to accommodate the component length
K0	Dimension designed to accommodate the component thickness
W	Overall width of the carrier tape
P1	Pitch between successive cavity centers

QUADRANT ASSIGNMENTS FOR PIN 1 ORIENTATION IN TAPE



Device	Package Type	Package Drawing	Pins	SPQ	Reel Diameter (mm)	Reel Width W1 (mm)	A0 (mm)	B0 (mm)	K0 (mm)	P1 (mm)	W (mm)	Pin1 Quadrant
PTMP1827NGRT	WSON	NGR	8	250	178	8.4	2.75	2.75	0.95	4	8	Q2

TAPE AND REEL BOX DIMENSIONS



Device	Package Type	Package Drawing	Pins	SPQ	Length (mm)	Width (mm)	Height (mm)
PTMP1827NGRT	WSN	NGR	8	250	205	200	33

PACKAGING INFORMATION

Orderable Device	Status (1)	Package Type	Package Drawing	Pins	Package Qty	Eco Plan (2)	Lead finish/ Ball material (6)	MSL Peak Temp (3)	Op Temp (°C)	Device Marking (4/5)	Samples
PTMP1827NGRT	ACTIVE	WSO	NGR	8	250	TBD	Call TI	Call TI	-55 to 150		Samples

(1) The marketing status values are defined as follows:

ACTIVE: Product device recommended for new designs.

LIFEBUY: TI has announced that the device will be discontinued, and a lifetime-buy period is in effect.

NRND: Not recommended for new designs. Device is in production to support existing customers, but TI does not recommend using this part in a new design.

PREVIEW: Device has been announced but is not in production. Samples may or may not be available.

OBSELETE: TI has discontinued the production of the device.

(2) **RoHS:** TI defines "RoHS" to mean semiconductor products that are compliant with the current EU RoHS requirements for all 10 RoHS substances, including the requirement that RoHS substance do not exceed 0.1% by weight in homogeneous materials. Where designed to be soldered at high temperatures, "RoHS" products are suitable for use in specified lead-free processes. TI may reference these types of products as "Pb-Free".

RoHS Exempt: TI defines "RoHS Exempt" to mean products that contain lead but are compliant with EU RoHS pursuant to a specific EU RoHS exemption.

Green: TI defines "Green" to mean the content of Chlorine (Cl) and Bromine (Br) based flame retardants meet JS709B low halogen requirements of <=1000ppm threshold. Antimony trioxide based flame retardants must also meet the <=1000ppm threshold requirement.

(3) MSL, Peak Temp. - The Moisture Sensitivity Level rating according to the JEDEC industry standard classifications, and peak solder temperature.

(4) There may be additional marking, which relates to the logo, the lot trace code information, or the environmental category on the device.

(5) Multiple Device Markings will be inside parentheses. Only one Device Marking contained in parentheses and separated by a "~" will appear on a device. If a line is indented then it is a continuation of the previous line and the two combined represent the entire Device Marking for that device.

(6) Lead finish/Ball material - Orderable Devices may have multiple material finish options. Finish options are separated by a vertical ruled line. Lead finish/Ball material values may wrap to two lines if the finish value exceeds the maximum column width.

Important Information and Disclaimer:The information provided on this page represents TI's knowledge and belief as of the date that it is provided. TI bases its knowledge and belief on information provided by third parties, and makes no representation or warranty as to the accuracy of such information. Efforts are underway to better integrate information from third parties. TI has taken and continues to take reasonable steps to provide representative and accurate information but may not have conducted destructive testing or chemical analysis on incoming materials and chemicals. TI and TI suppliers consider certain information to be proprietary, and thus CAS numbers and other limited information may not be available for release.

In no event shall TI's liability arising out of such information exceed the total purchase price of the TI part(s) at issue in this document sold by TI to Customer on an annual basis.

GENERIC PACKAGE VIEW

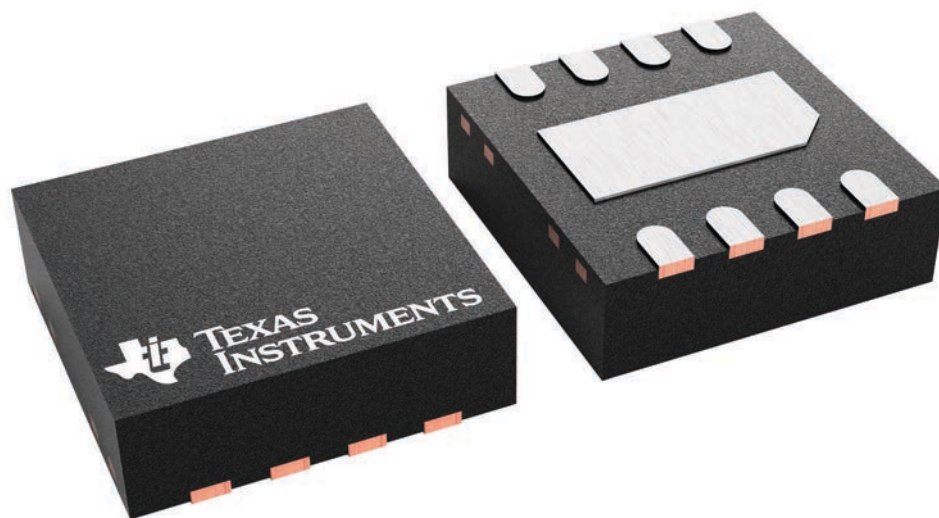
NGR 8

WSON - 0.8 mm max height

2.5 x 2.5, 0.5 mm pitch

PLASTIC SMALL OUTLINE - NO LEAD

This image is a representation of the package family, actual package may vary.
Refer to the product data sheet for package details.



重要声明和免责声明

TI“按原样”提供技术和可靠性数据（包括数据表）、设计资源（包括参考设计）、应用或其他设计建议、网络工具、安全信息和其他资源，不保证没有瑕疵且不做任何明示或暗示的担保，包括但不限于对适销性、某特定用途方面的适用性或不侵犯任何第三方知识产权的暗示担保。

这些资源可供使用 TI 产品进行设计的熟练开发人员使用。您将自行承担以下全部责任：(1) 针对您的应用选择合适的 TI 产品，(2) 设计、验证并测试您的应用，(3) 确保您的应用满足相应标准以及任何其他功能安全、信息安全、监管或其他要求。

这些资源如有变更，恕不另行通知。TI 授权您仅可将这些资源用于研发本资源所述的 TI 产品的应用。严禁对这些资源进行其他复制或展示。您无权使用任何其他 TI 知识产权或任何第三方知识产权。您应全额赔偿因在这些资源的使用中对 TI 及其代表造成的任何索赔、损害、成本、损失和债务，TI 对此概不负责。

TI 提供的产品受 [TI 的销售条款](#) 或 [ti.com](#) 上其他适用条款/TI 产品随附的其他适用条款的约束。TI 提供这些资源并不会扩展或以其他方式更改 TI 针对 TI 产品发布的适用的担保或担保免责声明。

TI 反对并拒绝您可能提出的任何其他或不同的条款。

邮寄地址：Texas Instruments, Post Office Box 655303, Dallas, Texas 75265

Copyright © 2022，德州仪器 (TI) 公司